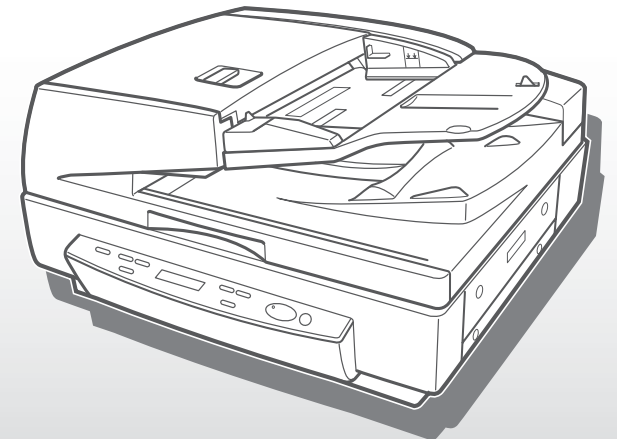


Canon

Document Scanner DR-7080C

INSTRUCTIONS
INSTRUCTIONS
BEDIENUNGSANLEITUNG
INSTRUCCIONES
ISTRUZIONI
INSTRUCTIES



Canon DR-7080C INSTRUCTIONS

Canon

CANON ELECTRONICS INC.

1248, SHIMOKAGEMORI, CHICHIBU-SHI, SAITAMA 369-1892, JAPAN

CANON U.S.A. INC.

ONE CANON PLAZA, LAKE SUCCESS, N.Y.11042, U.S.A.

CANON CANADA INC.

6390 DIXIE ROAD, MISSISSAUGA, ONTARIO L5T 1P7, CANADA

CANON EUROPA N.V.

BOVENKERKERWEG 59-61, P.O.BOX 2262 AMSTELVEEN, THE NETHERLANDS

CANON LATIN AMERICA, INC.

703 WATERFORD WAY SUITE 400 MIAMI, FLORIDA 33126 U.S.A.

CANON AUSTRALIA PTY. LTD.

1 THOMAS HOLT DRIVE, NORTH RYDE, SYDNEY. N.S.W, 2113. AUSTRALIA

CANON SINGAPORE PTE. LTD.

1 HARBOUR FRONT AVENUE #04-01 KEPPEL BAY TOWER SINGAPORE 098632

CANON HONGKONG COMPANY LTD.

9/F., THE HONG KONG CLUB BUILDING, 3A CHARTER ROAD, CENTRAL, HONG KONG.



CE-IM-440

FCC REGULATIONS (For 120V/220-240V models)

This equipment has been tested and found to comply with the limits for a Class A digital device, pursuant to Part 15 of the FCC Rules. These limits are designed to provide reasonable protection against harmful interference when the equipment is operated in a commercial environment. This equipment generates, uses, and can radiate radio frequency energy and, if not installed and used in accordance with the instruction manual, may cause harmful interference to radio communications. Operation of this equipment in a residential area is likely to cause harmful interference in which case the user will be required to correct the interference at his own expense.

Do not make any changes or modifications to the equipment unless otherwise specified in the manual. If such changes or modifications should be made, you could be required to stop operation of the equipment.

RADIO INTERFERENCE REGULATIONS (For 120V models)

This digital apparatus does not exceed the Class A limits for radio noise emissions from digital apparatus as set out in the Interference-causing equipment standard entitled "Digital Apparatus", ICES-003 of the Industry Canada.

RÈGLEMENT SUR LE BROUILLAGE RADIOÉLECTRIQUE (For 120V models)

Cet appareil numérique respecte les limites de bruits radioélectriques applicables aux appareils numériques de Classe A prescrites dans la norme sur le matériel brouilleur: "Appareils Numériques", NMB-003 édictée par l'Industrie Canada.

Für EMVG

Dieses Produkt ist zum Gebrauch im Wohnbereich, Geschäfts-und Gewerbebereich sowie in Kleinbetrieben vorgesehen.

MODEL NAMES

Model DR-7080C is identical to model M11049.

Model DR-7080C is the sales name of model M11049.

READ CAREFULLY BEFORE OPENING THE SEALED DISK PACKAGE

CANON SOFTWARE LICENSE AGREEMENT

IMPORTANT-READ THIS AGREEMENT BEFORE OPENING THE SEALED DISK PACKAGE! BY OPENING THE SEALED DISK PACKAGE, YOU ARE DEEMED TO AGREE TO BE BOUND BY THIS AGREEMENT.

This legal document is a license agreement between you and Canon Electronics Inc. ("Canon"). BY OPENING THE SEALED DISK PACKAGE, YOU ARE DEEMED TO AGREE TO BE BOUND BY THE TERMS OF THIS AGREEMENT. IF YOU DO NOT AGREE TO THE TERMS OF THIS AGREEMENT, DO NOT OPEN THE SEALED DISK PACKAGE AND PROMPTLY RETURN THE CANON SCANNER, THE DISK PACKAGE CONTAINING SCANNER DRIVER SOFTWARE PROGRAMS AND/OR SCANNER UTILITY SOFTWARE PROGRAM PROPRIETARY TO CANON OR ITS LICENSOR (THE "SOFTWARE") AND THE ACCOMPANYING DOCUMENTATION AND OTHER ITEMS TO THE PLACE WHERE YOU OBTAINED THEM FOR A REFUND BEFORE THEY ARE USED OR OPENED OR UNPACKED.

In consideration of the right to use the SOFTWARE, you agree to abide by the terms and conditions of this Agreement.

1. GRANT OF LICENSE: Canon grants you the personal, non-exclusive right to use the SOFTWARE only on a single computer. You may physically transfer the SOFTWARE from one computer to another provided that the SOFTWARE is used on only one computer at any time.

You shall not assign, sublicense, sell, rent, lease, loan, convey or transfer to any third party, or send or bring the SOFTWARE out of the country where you originally obtain it to other countries without required authorization of applicable governments, or copy, duplicate, translate or convert to another programming language the SOFTWARE or accompanying documentation, except as expressly provided herein.

Except as expressly permitted under the applicable law, you shall not alter, modify, disassemble, decompile or otherwise reverse engineer the SOFTWARE or accompanying documentation and you also shall not have any third party to do so.

2. BACK-UP COPY: You may make one copy of the SOFTWARE solely for a back-up purpose or copy the SOFTWARE onto the permanent storage device (e.g. a hard disk) of your computer and retain the original for a back-up purpose. Except as expressly permitted under the applicable law, any other copying of the SOFTWARE is a violation of this Agreement. You must reproduce and include the copyright notice on the back-up copy.

3. SUPPORT AND UPDATE: Canon, Canon's affiliate, their distributor or dealer is not responsible for maintaining or helping you to use the SOFTWARE. No updates, fixes or support will be made available for the SOFTWARE.

4. LIMITED WARRANTY AND DISCLAIMER OF INDEMNITY: Canon, Canon's affiliate, their distributor or dealer will not guarantee uninterrupted service, or absence or correction of errors. Therefore, the SOFTWARE is licensed on an "AS IS" basis without warranty of any kind. The diskette on which the SOFTWARE is recorded is warranted against defective material or workmanship under normal use for a period of ninety (90) days from the date you purchased the same as evidenced by a receipt or otherwise. The limited warranty does not apply if the failure of the diskette resulted from accident, abuse or misapplication of the SOFTWARE and shall not extend to anyone other than the original user of the SOFTWARE.

CANON, CANON'S AFFILIATE, THEIR DISTRIBUTOR OR DEALER DISCLAIMS ALL IMPLIED WARRANTIES, INCLUDING ANY WARRANTY OF MERCHANTABILITY OR FITNESS FOR A PARTICULAR PURPOSE, WITH RESPECT TO THE SOFTWARE OR ACCOMPANYING DOCUMENTATION.

NEITHER CANON, CANON'S AFFILIATE, THEIR DISTRIBUTOR NOR DEALER IS LIABLE FOR ANY LOSS OR DAMAGE INCLUDING CONSEQUENTIAL OR INCIDENTAL LOSS OR DAMAGE SUCH AS LOSS OF PROFITS, EXPENSE OR INCONVENIENCE, WHATSOEVER CAUSED BY OR ARISING OUT OF THE SOFTWARE, ACCOMPANYING DOCUMENTATION OR THE USE THEREOF.

CANON, CANON'S AFFILIATE, THEIR DISTRIBUTOR OR DEALER SHALL HAVE NO OBLIGATION TO INDEMNIFY YOU AGAINST ANY CLAIM OR SUIT BROUGHT BY A THIRD PARTY ALLEGING THAT THE SOFTWARE, ACCOMPANYING DOCUMENTATION OR THE USE THEREOF INFRINGES ANY INTELLECTUAL PROPERTY OF SUCH THIRD PARTY.

THE ABOVE IS CANON'S ENTIRE LIABILITY AND YOUR EXCLUSIVE REMEDY IN CONNECTION WITH THE SOFTWARE AND ACCOMPANYING DOCUMENTATION.

5. TERM: This Agreement is effective upon opening the sealed disk package and remains in effect until terminated. You may terminate this Agreement by destroying the SOFTWARE and any copy thereof. This Agreement will also terminate if you fail to comply with any of the terms of this Agreement. In addition to Canon enforcing its respective legal rights, you must then promptly destroy the SOFTWARE and any copy thereof.

6. U.S. GOVERNMENT RESTRICTED RIGHTS NOTICE: The SOFTWARE is provided with RESTRICTED RIGHTS. Use, duplication or disclosure is subject to restrictions as set forth in either subparagraph (c) (1) (ii) of the Rights in Technical Data and Computer Software clause at DFARS 252.227-7013 or subparagraph (c) (1) and (2) of the Commercial Computer Software Restricted Rights Clause at FAR 52.227-19, as applicable.

7. SEVERABILITY: In the event that provision of this Agreement is declared or found to be illegal by any court or tribunal of competent jurisdiction, such provision shall be null and void with respect to the jurisdiction of that court or tribunal and all the remaining provisions of this Agreement shall remain in full force and effect.

8. ACKNOWLEDGEMENT: BY OPENING THE SEALED DISK PACKAGE, YOU ACKNOWLEDGE THAT YOU HAVE READ THIS AGREEMENT, UNDERSTOOD IT, AND AGREE TO BE BOUND BY ITS TERMS AND CONDITIONS. YOU ALSO AGREE THAT THIS AGREEMENT IS THE COMPLETE AND EXCLUSIVE STATEMENT OF AGREEMENT BETWEEN YOU AND CANON CONCERNING THE SUBJECT MATTER HEREOF AND SUPERSEDES ALL PROPOSALS OR PRIOR AGREEMENTS, VERBAL OR WRITTEN, AND ANY OTHER COMMUNICATIONS BETWEEN YOU AND CANON RELATING TO THE SUBJECT MATTER HEREOF. NO AMENDMENT TO THIS AGREEMENT SHALL BE EFFECTIVE UNLESS SIGNED BY A DULY AUTHORIZED REPRESENTATIVE OF CANON.

Should you have any questions concerning this Agreement, or if you desire to contact Canon for any reason, please write to Canon's local affiliate.

A LIRE ATTENTIVEMENT AVANT D'OUVRI R L'EMBALLAGE SCELLE CONTENANT LA DISQUETTE !

CONTRAT DE LICENCE D'UTILISATION D'UN LOGICIEL CANON

Important — VEUILLEZ LIRE LE PRESENT CONTRAT avant d'ouvrir l'emballage scellé contenant la DISQUETTE. EN OUVRANT CET EMBALLAGE SCELLE, VOUS ACCEPTEZ D'ETRE LIE PAR LE PRESENT CONTRAT.

Le présent acte juridique est un contrat de licence entre Canon Electronics Inc. (« Canon ») et vous-même. L'OUVERTURE DE L'EMBALLAGE SCELLE DE LA DISQUETTE INDIQUERA VOTRE ACCEPTATION DE VOUS LIER PAR LES DISPOSITIONS DU PRESENT CONTRAT. SI VOUS N'ACCEPTEZ PAS LES TERMES DU PRESENT CONTRAT, N'OUVREZ PAS L'EMBALLAGE SCELLE DE LA DISQUETTE ET RETOURNEZ RAPIDEMENT LE SCANNER CANON, L'EMBALLAGE AVEC LA DISQUETTE CONTENANT LES PROGRAMMES LOGICIELS PILOTES DE SCANNER ET/OU L'UTILITE-DE SCANNER PROPRIETE DE CANON OU DE SON CONCEDANT (CI-APRES DENOMMES LE « LOGICIEL ») AINSI QUE LA DOCUMENTATION ET LES AUTRES ARTICLES QUI L'ACCOMPAGNENT OU VOUS LES AVEZ ACHETES POUR EN OBTENIR LE REMBOURSEMENT AVANT UTILISATION, OUVERTURE OU DEBALLAGE.

En contrepartie du droit d'utiliser le Logiciel, vous acceptez de respecter les termes et conditions du présent Contrat.

1. CONCESSION DE LICENCE : Canon vous octroie le droit personnel et non exclusif d'utiliser ce LOGICIEL sur un ordinateur unique. Le LOGICIEL peut être physiquement transféré d'un ordinateur à un autre à condition qu'il ne soit utilisé que sur un ordinateur à la fois.

Vous n'êtes pas autorisé à céder, consentir une sous-licence, vendre, donner à bail, louer, prêter, transmettre à un tiers le LOGICIEL, ni à l'envoyer ou l'emmener hors du pays où vous vous l'êtes procuré sans l'autorisation nécessaire des autorités compétentes, ni à copier, dupliquer, traduire ou convertir dans un autre langage de programmation le LOGICIEL ou la documentation qui l'accompagne, à l'exception de ce qui est expressément prévu aux présentes.

Sauf autorisation expresse conforme a la législation en vigueur, vous ne pouvez pas alterer, modifier, désassembler, décompiler ou effectuer des opérations d'ingénierie inverse de quelque sorte que ce soit sur le LOGICIEL, ni autoriser une tierce personne a le faire.

2. COPIE DE SAUVEGARDE : Vous êtes autorisé à faire une copie du LOGICIEL uniquement à des fins de sauvegarde, ou à l'installer sur la mémoire permanente (disque dur par exemple) de votre ordinateur et à conserver l'original uniquement comme sauvegarde. Sauf autorisation expresse conforme a la législation en vigueur, toute autre copie du LOGICIEL est une violation du présent contrat. L'avis sur les droits d'auteur doit être reproduit et inclus avec la copie de sauvegarde.

3. AIDE ET MISE A JOUR : Canon, sa filiale, leur distributeur ou revendeur ne sont pas responsables de la mise à jour ou de l'aide à l'utilisation du LOGICIEL. Aucune mise à jour, correction ni aide ne seront disponibles pour ce LOGICIEL.

4. EXCLUSION DE GARANTIE ET D'INDEMNISATION : Canon, sa filiale, leur distributeur ou revendeur ne garantissent pas un fonctionnement ininterrompu, ni l'absence ou la correction des erreurs. La licence est par conséquent concédée pour le LOGICIEL « en l'état », sans garantie de quelque nature que ce soit. La disquette contenant le LOGICIEL est garantie contre tout défaut de fabrication ou de main d'oeuvre pour autant qu'un usage normal en soit fait et ce pendant une période de quatre-vingt-dix (90) jours à compter de la date d'achat, reçu ou autre preuve d'achat faisant foi. La garantie limitée ne s'applique pas si la défaillance de la disquette résulte d'un accident, d'une utilisation abusive ou erronée du LOGICIEL et ne couvre en aucun cas une personne autre que le premier utilisateur du LOGICIEL.

CANON, SA FILIALE, LEUR DISTRIBUTEUR OU REVENDEUR EXCLUENT TOUTES GARANTIES, Y COMPRIS TOUTE GARANTIE DE QUALITE MARCHANDE OU DE CONVENANCE A UNE UTILISATION SPECIFIQUE, EN CE QUI CONCERNE LE LOGICIEL OU LA DOCUMENTATION QUI L'ACCOMPAGNE.

NI CANON, NI SA FILIALE, NI LEUR DISTRIBUTEUR OU REVENDEUR NE SONT RESPONSABLES D'AUCUN DOMMAGE OU PERTE INDIRECT OU ACCESSOIRE, Y COMPRIS D'UN MANQUE A GAGNER, DE FRAIS OU DE PERTURBATIONS, QUELS QU'ILS SOIENT, CAUSES PAR OU PROVENANT DU LOGICIEL, DE LA DOCUMENTATION QUI L'ACCOMPAGNE OU DE LEUR UTILISATION.

CANON, SA FILIALE, LEUR DISTRIBUTEUR OU REVENDEUR NE SERONT TENUS D'AUCUNE OBLIGATION D'INDEMNISATION À VOTRE EGARD RELATIVE A UNE QUELCONQUE RECLAMATION OU ACTION EN JUSTICE FORMEE PAR UN TIERS PRETENDANT QUE LE LOGICIEL, LA DOCUMENTATION QUI L'ACCOMPAGNE OU LEUR UTILISATION CONSTITUERAIENT LA CONTREFACON D'UN QUELCONQUE DROIT DE PROPRIETE INTELLECTUELLE DE CE TIERS.

CE QUI PRECEDE CONSTITUE L'INTEGRALITE DES OBLIGATIONS DE CANON ET REPRESENTE VOTRE SEUL RECOURS EN CE QUI CONCERNE LE LOGICIEL ET LA DOCUMENTATION QUI L'ACCOMPAGNE.

5. DUREE : Le présent Contrat entrera en vigueur au moment où vous ouvrirez l'emballage scellé de la disquette et demeurera applicable jusqu'à sa résiliation. Vous pouvez résilier le présent Contrat en détruisant le LOGICIEL et toute copie de ce dernier. Le présent Contrat sera également résilié si vous violez l'une des dispositions du présent Contrat. Outre l'application de ses droits propres par Canon, vous devrez alors détruire rapidement le Logiciel et toute copie de ce dernier.

6. NOTICE RELATIVE AUX DROITS RESTREINTS IMPOSES PAR L'ADMINISTRATION FEDERALE AMERICAINE : Le LOGICIEL est fourni avec des DROITS RESTREINTS. Son usage, sa reproduction ou sa divulgation sont soumis aux restrictions énoncées soit au sous-paragraphe (c) (1) (ii) de l'article 252.227-7013 du DFARS relatif aux Droits sur les données techniques et les logiciels informatiques, soit au sous-paragraphe (c) (1) et (2) de l'article 52.227-19 du FAR relatif aux Droits restreints sur les logiciels informatiques à caractère commercial, selon le cas.

7. DIVISIBILITE : Au cas où une disposition du présent Contrat serait déclarée ou considérée comme illégale par un tribunal ou une juridiction ayant compétence, cette disposition sera nulle et non avenue au regard de ce tribunal ou de cette juridiction, et toutes les dispositions subsistantes du présent Contrat conserveront leur plein et entier effet.

8. RECONNAISSANCE : EN OUVRANT L'EMBALLAGE SCELLE DE LA DISQUETTE, VOUS RECONNAISSEZ AVOIR LU LE PRESENT CONTRAT, L'AVOIR COMPRIS, ET ACCEPTEZ D'ETRE LIE PAR SES TERMES ET CONDITIONS. VOUS ACCEPTEZ EGALEMENT QUE LE PRESENT CONTRAT CONSTITUE L'ACCORD INTEGRAL ET EXCLUSIF ENTRE CANON ET VOUS-MEME CONCERNANT L'OBJET DES PRESENTES ET SE SUBSTITUE A TOUTES LES PROPOSITIONS OU ENGAGEMENTS ANTERIEURS, VERBAUX OU ECRITS, ET TOUTES AUTRES COMMUNICATIONS ENTRE LES PARTIES RELATIVES A L'OBJET DES PRESENTES. AUCUNE MODIFICATION DU PRESENT CONTRAT NE POURRA EMPORTER EFFET A MOINS D'ETRE SIGNED PAR UN RESPONSABLE DUMENT AUTORISE DE CANON.

Si vous aviez des questions concernant le présent Contrat, ou si vous désiriez entrer en contact avec Canon pour quelque motif que ce soit, veuillez écrire à la filiale locale de Canon la plus proche de votre domicile.

VOR DEM ÖFFNEN DER VERSIEGELTEN DISKETTENPACKUNG BITTE AUFMERKSAM LESEN

CANON SOFTWARE-LIZENZVERTRAG

WICHTIG - LESEN SIE DIESEN VERTRAG, BEVOR SIE DIE VERSIEGELTE DISKETTENPACKUNG ÖFFNEN! DURCH ÖFFNEN DER VERSIEGELTEN DISKETTENPACKUNG ERKLÄREN SIE SICH MIT DIESEN VERTRAGSBEDINGUNGEN EINVERSTANDEN.

Dieses juristische Dokument ist ein Lizenzvertrag zwischen Ihnen und Canon Electronics Inc. (im folgenden "Canon"). DURCH ÖFFNEN DER VERSIEGELTEN DISKETTENPACKUNG ERKLÄREN SIE SICH DAMIT EINVERSTANDEN; DIE BESTIMMUNGEN DIESES LIZENZVERTRAGES EINZUHALTEN; WENN SIE MIT DIESEN VERTRAGSBESTIMMUNGEN NICHT EINVERSTANDEN SIND, SO DÜRFEN SIE DIE DISKETTENPACKUNG NICHT ÖFFNEN. GEBEN SIE IN DIESEM FALL DEN CANON SCANNER UND DIE UNGEÖFFNETE DISKETTENPACKUNG MIT DEN CANON-EIGENEN BZW. DEM LIZENZNEHMER GEHÖREN DEN SCANNERTREIBER-SOFTWAREPROGRAMMEN UND/ODER SCANNER UTILITY SOFTWARE PROGRAM (IM FOLGENDEN "SOFTWARE") UND DIE DAZUGEHÖRIGE DOKUMENTATION SOWIE ALLE ANDEREN TEILE DES ERWORBENEN PRODUKTS UNVERZÜGLICH DA, WO SIE DAS PRODUKT ERWORBEN HABEN, ZURÜCK; DER ERWERBSPREIS WIRD IHNEN VOLL ZURÜCKERSTATTET, SOLANGE DIE VERSIEGELUNG UNBESCHÄDIGT IST.

In Anbetracht des Rechts, die SOFTWARE zu benutzen, erklären Sie sich mit den folgenden Bestimmungen dieses Vertrags einverstanden.

1. LIZENZERTEILUNG: Canon gewährt Ihnen das einfache, nicht-ausschließliche und persönliche Recht, die beiliegende Kopie der SOFTWARE nur auf einem einzelnen Computer zu benutzen. Als Lizenznehmer dürfen Sie die SOFTWARE in physikalischer Form von einem Computer auf einen anderen Computer übertragen, vorausgesetzt, daß sie zu irgendeinem Zeitpunkt immer nur auf einem einzelnen Computer genutzt wird.

Sie dürfen die SOFTWARE weder weitergeben, unterlizenzieren, verkaufen, vermieten, verleasen, verleihen, an einen Dritten übergeben oder einem Dritten sonstige zugänglich machen oder die SOFTWARE aus dem Land, in dem sie ursprünglich erworben wurde in ein anderes Land senden oder bringen, ohne die erforderliche Genehmigung der entsprechenden Regierung einzuholen. Die SOFTWARE und das zugehörige schriftliche Material darf weiterhin nicht kopiert, dupliziert, übersetzt oder in eine andere Programmiersprache konvertiert werden, außer, dies wird hierin ausdrücklich festgelegt.

Änderung, Disassemblierung, Dekompilierung oder Reverse Engineering der SOFTWARE sowie der zugehörigen Dokumentation durch den Lizenznehmer oder durch Dritte sind untersagt. Falls diese Bestimmung nicht der gängigen Rechtsprechung entspricht, ist sie gegenstandslos.

2. SICHERUNGSKOPIE: Das Anfertigen einer einzigen Reservekopie der SOFTWARE nur zu Sicherungszwecken oder das Anfertigen einer Kopie der SOFTWARE auf dem permanenten Datenträger (z. B. Festplatte) Ihres Computers und das Behalten des Originals zu Sicherungszwecken ist erlaubt. Falls diese Bestimmung nicht der gängigen Rechtsprechung entspricht, ist sie gegenstandslos, jegliches weitere Kopieren der SOFTWARE stellt eine Verletzung dieses Vertrags dar. Sie sind verpflichtet, auf der Reservekopie den Urheberrechtsvermerk anzubringen bzw. ihn darin aufzunehmen.

3. SUPPORT UND AKTUALISIERUNG: Canon, Canon- Geschäftsstelle, der Verkäufer oder Händler ist nicht verantwortlich für die Pflege der SOFTWARE oder Unterstützung des Kunden bezüglich der Verwendung der SOFTWARE. Für die SOFTWARE werden weder Aktualisierungen, Reparaturen noch Support angeboten.

4. GEWÄHLEISTUNGSAUSSCHLUB UND HAFTUNGSBESCHRÄNKUNG: Canon, Canon- Geschäftsstelle, der Verkäufer oder Händler können nicht garantieren, daß ein ununterbrochener Service möglich ist oder daß keine Fehler auftreten bzw. diese Fehler korrigiert werden. Aus diesem Grunde wird die SOFTWARE im "Ist-Zustand" ohne jegliche Garantie lizenziert. Sollte die Diskette, auf der die SOFTWARE aufgezeichnet ist, fehlerhaft sein, so kann der Erwerber Ersatzlieferung während der Gewährleistungszeit von neunzig (90) Tagen ab Kaufdatum verlangen, wobei das Kaufdatum durch eine Rechnung oder Quittung belegt werden muß. Die eingeschränkte Garantie gilt nicht, wenn die Beschädigung der Diskette auf einen Unfall, Mißbrauch oder falsche Anwendung der SOFTWARE zurückzuführen ist und darf sich nicht auf eine andere Person als den ursprünglichen Benutzer der SOFTWARE ausdehnen.

CANON, CANON - GESCHÄFTSSTELLE, DER VERKÄUFER ODER HÄNDLER ÜBERNEHMEN KEINERLEI STILLSCHWEIGENDE GARANTIE N, DARUNTER GARANTIE N ZUR HANDELSÜBLICHEN BRAUCHBARKEIT ODER NUTZBARKEIT ZU EINEM BESTIMMTEN ZWECK BEZÜGLICH DER SOFTWARE ODER DES ZUGEHÖRIGEN SCHRIFTLICHEN MATERIALS.

WEDER CANON, CANON - GESCHÄFTSSTELLE, DER VERKÄUFER NOCH DER HÄNDLER KANN HAFTBAR GEMACHT WERDEN FÜR VERLUSTE ODER SCHÄDEN, EINSCHLIESSLICH FOLGESCHÄDEN ODER SONSTIGEN VERLUSTEN WIE ENTGANGENE GEWINNE, AUSGABEN ODER UNANNEHMlichkeiten, DIE EVENTUELL DURCH DIE SOFTWARE VERURSACHT WURDEN ODER DARAU S RESULTIEREN.

CANON, CANON - GESCHÄFTSSTELLE, DER VERKÄUFER ODER HÄNDLER IST KEINESFALLS VERPFLICHTET, SIE GEGEN JEGLICHE ANSPRÜCHE ODER DURCH DRITTE PARTEIEN ANGESTRENGTE GERICHTSVERFAHREN SCHADLOS ZU HALTEN, WENN ES DARUM GEHT, DASS DIE SOFTWARE ODER DAS ZUGEHÖRIGE SCHRIFTLICHE MATERIAL ODER DEREN VERWENDUNG DAS GEISTIGE EIGENTUM DIESER DRITTEN PARTEI ANGEBLICH VERLETZT.

DAS OBEN GESAGTE UMFASST CANONS GESAMTE HAFTUNG UND DEN EXKLUSIVEN RECHTSBEHEL F DES LIZENZNEHMERS IN VERBINDUNG MIT DER SOFTWARE UND DEM ZUGEHÖRIGEN SCHRIFTLICHEN MATERIAL.

5. DAUER DES VERTRAGS: Dieser Vertrag tritt nach Öffnen der versiegelten Diskettenpackung in Kraft und bleibt in Kraft, bis er beendet wird. Sie können diesen Vertrag beenden, indem Sie die SOFTWARE und alle Kopien vernichten. Dieser Vertrag endet ebenfalls, wenn eine Bedingung dieses Vertrags verletzt wird. Außerdem müssen Sie anschließend sofort die SOFTWARE und alle Kopien vernichten, damit Canon seine entsprechenden Rechte gerichtlich durchsetzen kann.

6. HINWEIS AUF EINGESCHRÄNKTE RECHTE DER US-REGIERUNG: Die SOFTWARE wird mit EINGESCHRÄNKTEN RECHTEN geliefert. Verwendung, Vervielfältigung oder Offenlegung unterliegt den Einschränkungen, die dargelegt sind in Unterabschnitt (c) (1) (ii) der Klausel "Rights in Technical Data and Computer Software" in DFARS 252.227-7013 oder Unterabschnitt (c)(1) und (2) der "Commercial Computer Software Restricted Rights Clause" in FAR 52.227-19, je nach Anwendbarkeit.

7. TEILNICHTIGKEIT: Falls eine Bedingung dieses Vertrags von einem Gericht oder Tribunal kompetenter Rechtsprechung für rechtswidrig erklärt oder befunden wird, ist diese Bedingung null und nichtig bezüglich der Rechtssprechung dieses Gerichts oder Tribunals, und die restlichen Bedingungen dieses Vertrags behalten volle Gültigkeit und bleiben in Kraft.

8. BESTÄTIGUNG: DURCH ÖFFNEN DER VERSIEGELTEN DISKETTENPACKUNG BESTÄTIGEN SIE, DASS SIE DIESEN VERTRAG GELESEN UND VERSTANDEN HABEN UND DIE BEDINGUNGEN DES VERTRAGS EINHALTEN. SIE SIND EBENFALLS EINVERSTANDEN, DASS DIESER VERTRAG DIE VOLLSTÄNDIGE UND EXKLUSIVE EINVERSTÄNDNISERKLÄRUNG ZWISCHEN IHNEN UND CANON BEZÜGLICH DIESER ANGELEGENHEIT DARSTELLT UND DASS ER ALLE VORSCHLÄGE UND VORHERIGEN VERTRÄGE - GANZ GLEICH OB MÜNDLICH ODER SCHRIFTLICH - UND ALLE ANDEREN ABSPRACHEN ZWISCHEN IHNEN UND CANON BEZÜGLICH DIESER ANGELEGENHEIT AUSSER KRAFT SETZT. KEINE ERGÄNZUNG ZU DIESEM VERTRAG IST WIRKSAM, WENN SIE NICHT VON EINEM ORDNUNGSGEMÄSS BESTELLTEN VERTRETER VON CANON UNTERZEICHNET WURDE.

Falls Sie Fragen zu diesem Vertrag haben oder Canon aus einem anderen Grunde ansprechen wollen, wenden Sie sich bitte an die zuständige Canon-Geschäftsstelle, die in der Dokumentation zur Software aufgelistet ist.

LEA ATENTAMENTE ESTA ADVERTENCIA ANTES DE ABRIR EL PAQUETE SELLADO QUE CONTIENE LOS DISCOS

CONTRATO DE LICENCIA DE SOFTWARE DE CANON

IMPORTANTE: LEA ESTE CONTRATO ANTES DE ABRIR EL PAQUETE SELLADO QUE CONTIENE LOS DISCOS. AL ABRIRLO, SE CONSIDERA QUE ACEPTA LAS CLÁUSULAS DE ESTE CONTRATO.

Este documento es un contrato de licencia entre usted y Canon Electronics Inc. ("Canon"). AL ABRIR EL PAQUETE SELLADO QUE CONTIENE LOS DISCOS, SE ENTIENDE QUE USTED ACEPTA LAS CLÁUSULAS DE ESTE CONTRATO. SI NO ESTÁ DE ACUERDO CON LAS CLÁUSULAS DE ESTE CONTRATO, NO ABRA EL PAQUETE SELLADO QUE CONTIENE LOS DISCOS Y DEVUELVA INMEDIATAMENTE, ANTES DE UTILIZARLOS, ABRIRLOS O DESEMPAQUETARLOS, EL ESCÁNER CANON, EL PAQUETE DE DISCOS QUE CONTIENE LOS PROGRAMAS DE SOFTWARE DEL CONTROLADOR DEL ESCÁNER PROGRAMA DE UTILIDAD DEL ESCANER Y/ O CANON O DE QUIEN LE OTORGÓ LA LICENCIA (EL "SOFTWARE") Y LA DOCUMENTACIÓN QUE LO ACOMPAÑA, JUNTO CON CUALQUIER OTRO ELEMENTO QUE HAYA RECIBIDO, AL LUGAR DONDE LOS HAYA ADQUIRIDO, A EFECTOS DE UN REEMBOLSO TOTAL.

En contrapartida por el derecho de utilización del SOFTWARE, usted se compromete a cumplir los términos y condiciones de este contrato.

1. OTORGAMIENTO DE LICENCIA. Canon le otorga el derecho personal, no exclusivo, de utilizar el SOFTWARE en un solo ordenador. Está autorizado a transferir físicamente el SOFTWARE de un ordenador a otro, siempre que el SOFTWARE se utilice sólo en un ordenador a la vez.

No está autorizado a asignar, otorgar sublicencias, vender, alquilar, prestar, ceder ni transferir el SOFTWARE a terceros, ni a enviarlo ni llevarlo fuera del país donde lo adquirió originalmente sin obtener las autorizaciones que fueran necesarias de los gobiernos involucrados, ni a copiar, duplicar, traducir ni convertir a otro lenguaje de programación el SOFTWARE ni la documentación que lo acompaña, a menos que se establezca expresamente en este contrato.

Excepto bajo aquellas condiciones permitidas expresamente por las leyes aplicables, no podrá alterar, modificar, desmontar, descompilar o de cualquier otra forma invertir la ingeniería del SOFTWARE o la documentación adjunta ni encargar a un tercero que lo realice.

2. COPIA DE SEGURIDAD. Usted está autorizado a hacer una copia del SOFTWARE con el único propósito de guardar una copia de seguridad, o copiar el SOFTWARE en un dispositivo de almacenamiento permanente (por ejemplo, un disco duro) de su ordenador y mantener el original como copia de seguridad. Excepto bajo aquellas condiciones permitidas expresamente por las leyes aplicables, cualquier otra copia que se haga del SOFTWARE se considerará una violación de este contrato. La nota de derechos de autor debe reproducirse e incluirse en la copia de seguridad.

3. SOPORTES Y ACTUALIZACIÓN. Canon, la afiliada de Canon, el distribuidor o representante no son responsables del mantenimiento ni de enseñarle a utilizar el SOFTWARE. No se pondrán a su disposición actualizaciones, arreglos ni soporte para el SOFTWARE.

4. GARANTÍA LIMITADA E INDEMNIZACIÓN. Canon, la afiliada de Canon, el distribuidor o representante no garantizarán el servicio ininterrumpido, ni la ausencia ni la corrección de errores. Por lo tanto, la licencia para la utilización del SOFTWARE se entrega "TAL CUAL" sin garantías de ninguna índole. El disquete en el cual se entrega el SOFTWARE tiene garantía por defectos de material o de mano de obra en condiciones normales de uso por un período de noventa (90) días a partir de la fecha de compra según conste en el recibo u otro documento similar. Esta garantía limitada no se aplica a los errores del disquete que se deban a un accidente, abuso o mala utilización del SOFTWARE y no son aplicables a ninguna otra persona que no sea el otro usuario original del SOFTWARE.

CANON, LA AFFILIADA DE CANON, EL DISTRIBUIDOR O EL REPRESENTANTE NO SE HACEN RESPONSABLES DE NINGUNA GARANTÍA IMPLÍCITA, INCLUYENDO CUALQUIER TIPO DE GARANTÍA DE COMERCIALIZACIÓN O ADECUACIÓN PARA UN PROPÓSITO DETERMINADO, RESPECTO AL SOFTWARE O A LA DOCUMENTACIÓN ADJUNTA.

CANON, LA AFFILLADA DE CANON, EL DISTRIBUIDOR Y EL REPRESENTANTE NO SE HACEN RESPONSABLES DE NINGÚN DAÑO O PÉRDIDA, INCLUYENDO CUALQUIER TIPO DE DAÑO O PÉRDIDA INCIDENTAL O QUE PUDIERA DERIVARSE, COMO UNA PÉRDIDA DE BENEFICIOS, POSIBLES GASTOS O INCONVENIENTES, SEA CUAL FUERE LA CAUSA O DERIVADOS DEL SOFTWARE, LA DOCUMENTACIÓN ADJUNTA O EL USO.

CANON, LA AFFILIADA DE CANON, EL DISTRIBUIDOR Y EL REPRESENTANTE NO TIENEN NINGUNA OBLIGACIÓN DE INDEMNIZARLE POR NINGUNA RECLAMACIÓN REALIZADA POR TERCEROS QUE ALEGUEN QUE EL SOFTWARE, LA DOCUMENTACIÓN ADJUNTA O SU USO INFRINJA CUALQUIER PROPIEDAD INTELECTUAL DE ESOS TERCEROS.

TODO LO ANTERIORMENTE EXPUESTO ES LA ÚNICA RESPONSABILIDAD QUE ASUME CANON, Y CONSTITUYE EL ÚNICO DERECHO DE REPARACIÓN QUE USTED PUEDE RECLAMAR EN RELACIÓN AL SOFTWARE Y LA DOCUMENTACIÓN ADJUNTA.

5. TÉRMINO. Este Contrato entrará en vigor a partir del momento en que se abra el paquete de discos sellado y seguirá en vigor hasta que lo finalice. Puede finalizar este Contrato destruyendo el SOFTWARE y todas sus copias. Este Contrato también finalizará si usted no cumple algunos de sus términos. Además de cumplir los derechos legales de Canon, en ese caso usted deberá destruir el SOFTWARE y todas sus copias de forma inmediata.

6. NOTA SOBRE LOS DERECHOS RESTRINGIDOS DEL GOBIERNO DE LOS EE.UU. Este SOFTWARE se entrega con DERECHOS RESTRINGIDOS. El uso, copia o difusi—n están sujetos a las restricciones que se establecen en el subapartado (c) (1) (ii) de la cláusula de Derechos de datos técnicos y software informático de DFAR 252.227-7013 o en el subapartado (c) (1) y (2) de la cláusula Derechos restringidos de software informático comercial de FAR 52.227-19, según proceda.

7. RESERVA. En el caso de que la provisi—n de este Contrato se declare o considere ilegal por parte de cualquier tribunal o comisi—n de jurisdicci—n competente, esa provisi—n será nula respecto a la jurisdicci—n de ese tribunal o comisi—n y las demás provisiones de este Contrato conservarán toda su vigencia.

8. RECONOCIMIENTO. AL ABRIR EL PAQUETE DE DISCOS SELLADO, USTED RECONOCE QUE HA LEÍDO ESTE ACUERDO, LO HA ENTENDIDO Y ESTÁ DE ACUERDO CON SUS CLÁUSULAS Y CONDICIONES. TAMBIÉN CONSIDERA QUE ESTE CONTRATO CONSTITUYE LOS TÉRMINOS DEL CONTRATO COMPLETOS Y EXCLUSIVOS ENTRE USTED Y CANON REFERENTE AL TEMA QUE NOS IMPLICA, Y REEMPLAZA TODAS LAS PROPUESTAS O CONTRATOS ANTERIORES, YA SEAN VERBALES O ESCRITOS, Y CUALQUIER OTRO TIPO DE COMUNICACIÓN ENTRE USTED Y CANON RELACIONADA CON ESTE TEMA. NINGUNA RECTIFICACIÓN DE ESTE ACUERDO SERÁ EFECTIVA A MENOS QUE ESTÉ FIRMADA POR UN REPRESENTANTE DE CANON DEBIDAMENTE AUTORIZADO.

En caso de que desee plantear alguna pregunta sobre este Contrato, o desee ponerse en contacto con Canon por cualquier motivo, escriba a la afiliada local de Canon.

LEGGERE ATTENTAMENTE PRIMA DI APRIRE LA CONFEZIONE SIGILLATA

CONTRATTO DI LICENZA SOFTWARE CANON

IMPORTANTE: LEGGERE IL SEGUENTE CONTRATTO PRIMA DI APRIRE LA CONFEZIONE SIGILLATA. L'APERTURA DELLA CONFEZIONE SIGILLATA CONTENENTE IL SOFTWARE COMPORTA L'ACCETTAZIONE DEL CONTRATTO.

Il presente documento costituisce il contratto di licenza tra l'utente e Canon Electronics Inc. ("Canon"). L'APERTURA DELLA CONFEZIONE SIGILLATA COMPORTA L'ACCETTAZIONE DEI TERMINI DEL PRESENTE CONTRATTO. QUALORA NON SI INTENDESSE ADERIRE ALLE CONDIZIONI DEL PRESENTE CONTRATTO, NON APRIRE LA CONFEZIONE SIGILLATA E RESTITUIRE PRONTAMENTE LO SCANNER CANON, LA CONFEZIONE SIGILLATA CONTENENTE I DRIVER DELLO SCANNER E/O PROGRAMMA SOFTWARE UTILITY SCANNER DI PROPRIETÀ DI CANON O DEL SUO LICENZIATARIO ("SOFTWARE"), LA RELATIVA DOCUMENTAZIONE ED ALTRI COMPONENTI PRESSO IL LUOGO DI ACQUISTO PER IL RIMBORSO CHE VERRÀ CORRISPOSTO UNICAMENTE NEL CASO IN CUI I SUDDETTI COMPONENTI NON SIANO STATI USATI, APERTI O DISIMBALLATI.

Al fine di poter usufruire del diritto di utilizzare il SOFTWARE, l'utente accetta di rispettare i termini e le condizioni del presente Contratto.

1. CONCESSIONE DELLA LICENZA: Canon concede all'utente il diritto personale non esclusivo di usare il SOFTWARE unicamente su un solo computer. L'utente può trasferire fisicamente il SOFTWARE da un computer ad un altro, purché il SOFTWARE venga usato soltanto su una macchina alla volta.

L'utente non può assegnare, offrire in licenza, vendere, affittare, noleggiare, prestare, trasferire o cedere a terze parti, né spedire o esportare il SOFTWARE in un paese diverso da quello in cui è stato ottenuto originariamente senza la necessaria autorizzazione dei governi interessati, né copiare, duplicare, tradurre o convertire in un altro linguaggio di programmazione il SOFTWARE o la relativa documentazione, se non nei casi ivi espressamente previsti.

[Ad eccezione di quanto espressamente dichiarato dalle leggi in vigore] L'utente non può alterare, modificare, disassemblare, decompilare o altrimenti assemblare all'inverso il SOFTWARE o la relativa documentazione, né può autorizzare terze parti a fare quanto sopra descritto.

2. COPIA DI RISERVA: L'utente può creare una copia del SOFTWARE esclusivamente a scopo di archiviazione o copiare il SOFTWARE su un'unità di memorizzazione permanente (ad esempio, un disco fisso) del proprio computer e conservare la copia originale come copia di riserva. [Ad eccezione di quanto espressamente dichiarato dalle leggi in vigore] Qualsiasi altra copia del SOFTWARE costituisce una violazione del presente Contratto. L'utente è tenuto a includere le informazioni di copyright sulla copia di riserva.

3. SUPPORTO ED AGGIORNAMENTO: Canon, la consociata Canon, il loro distributore o rivenditore non sono responsabili della manutenzione o della prestazione di assistenza per l'uso del SOFTWARE. Per il SOFTWARE, non verranno resi disponibili aggiornamenti, correzioni o supporto di alcun genere.

4. GARANZIA LIMITATA: Canon, la consociata Canon, il loro distributore o rivenditore non garantiscono la prestazione continuata, né la mancanza o la correzione di errori. Di conseguenza, il SOFTWARE viene fornito in licenza "COSÌ COM'È", senza alcuna garanzia. Il minidisco su cui il SOFTWARE è memorizzato è garantito da difetti di fabbricazione in condizioni di uso normale per un periodo di novanta (90) giorni dalla data di acquisto, come comprovato dalla necessaria documentazione. La garanzia limitata non è applicabile nel caso in cui il minidisco venga danneggiato accidentalmente o in caso di uso improprio del SOFTWARE e sarà comunque a solo beneficio dell'utente originale del SOFTWARE.

CANON, LA CONSOCIATA CANON, IL LORO DISTRIBUTORE O RIVENDITORE NON RICONOSCE ALCUNA GARANZIA IMPLICITA, IVI COMPRESA LA GARANZIA DI COMMERCIALIZZABILITÀ OD IDONEITÀ PER UNO SCOPO PARTICOLARE.

NÉ CANON, NÉ LA CONSOCIATA CANON, NÉ IL LORO DISTRIBUTORE O RIVENDITORE SARANNO IN NESSUN CASO RESPONSABILI DI ALCUNA PERDITA O DANNO, COMPRESA QUALSIVOGLIA PERDITA O DANNO CONSEGUENZIALE OVVERO ACCIDENTALE, QUALE, AD ESEMPIO, MANCATO GUADAGNO, SPESA OD INCONVENIENTE IN QUALSIVOGLIA MODO DERIVANTE O PROVOCATO DAL SOFTWARE, DALLA DOCUMENTAZIONE CHE LO ACCOMPAGNA O DALL'UTILIZZO DI DETTO SOFTWARE O DETTA DOCUMENTAZIONE.

CANON, LA CONSOCIATA CANON, IL LORO DISTRIBUTORE O RIVENDITORE NON AVRÀ ALCUN OBBLIGO DI INDENNIZZO NEI CONFRONTI DELL'UTENTE RELATIVAMENTE A RIVENDICAZIONI SOLLEVATE O PROCEDIMENTI LEGALI INTENTATI DA TERZI CONTRO L'UTENTE MEDESIMO A CAUSA DELLA PRESUNTA VIOLAZIONE DELLA PROPRIETÀ INTELLETTUALE DI DETTI TERZI DERIVANTE DAL SOFTWARE, DALLA DOCUMENTAZIONE CHE LO ACCOMPAGNA O DALL'UTILIZZO DI DETTO SOFTWARE O DETTA DOCUMENTAZIONE.

QUANTO SOPRA COSTITUISCE L'INTERA DICHIARAZIONE DI RESPONSABILITÀ DI CANON ED IL RIMEDIO ESCLUSIVO DELL'UTENTE IN RELAZIONE AL SOFTWARE ED ALLA DOCUMENTAZIONE CHE LO ACCOMPAGNA.

5. DURATA: Il presente Contratto entra in vigore all'atto dell'apertura del pacchetto sigillato e rimane in vigore fino a rescissione avvenuta. Il presente Contratto può essere rescisso distruggendo questo SOFTWARE ed ogni copia del medesimo. Il presente Contratto viene anche rescisso qualora l'utente manchi di ottemperare a qualsivoglia clausola del Contratto medesimo. Oltre ad onorare tutti gli obblighi legali nei confronti di Canon, l'utente è altresì tenuto a distruggere questo SOFTWARE ed ogni copia del medesimo.

6. NOTA SULLA LIMITAZIONE DEI DIRITTI SANCTA DAL GOVERNO U.S.A.: Questo SOFTWARE viene fornito con LIMITAZIONE DEI DIRITTI. L'utilizzo, la duplicazione o la diffusione è soggetta a limitazioni ai sensi del subparagrapho (c) (1) (ii) della clausola Rights in Technical Data and Computer Software, DFAR 252.227-7013, ovvero del subparagrapho (c) (1) e (2) della clausola Commercial Computer Software Restricted Rights, FAR 52.227-19, secondo applicabilità.

7. STRALCIABILITÀ: Nel caso in cui una disposizione del presente Contratto venga ritenuta o dichiarata illegale da qualsivoglia corte o tribunale avente giurisdizione, detta disposizione sarà considerata nulla e senza effetto nell'ambito giurisdizionale di detta corte o detto tribunale, mentre tutte le altre disposizioni del presente Contratto continueranno ad avere piena validità ed effetto.

8. DICHIARAZIONE DI ACCETTAZIONE: L'APERTURA DEL PRESENTE PACCHETTO SIGILLATO COSTITUISCE IL RICONOSCIMENTO IMPLICITO DI AVER LETTO E COMPRESO IL PRESENTE CONTRATTO E DI AVERNE ACCETTATO I TERMINI E LE DISPOSIZIONI. L'UTENTE RICONOSCE ALTRESÌ CHE IL PRESENTE CONTRATTO RAPPRESENTA IL COMPLETO ED ESCLUSIVO ATTO DI INTESA TRA CANON E L'UTENTE MEDESIMO RELATIVAMENTE ALL'OGGETTO DEL CONTRATTO E CHE IL PRESENTE CONTRATTO SOSTITUISCE QUALSIVOGLIA PROPOSTA OD ACCORDO PRECEDENTE, SIA SCRITTO CHE ORALE, E QUALSIVOGLIA ALTRA COMUNICAZIONE INTERCORSA TRA CANON E L'UTENTE IN MERITO ALL'OGGETTO DEL CONTRATTO. NESSUN EMENDAMENTO AL PRESENTE CONTRATTO SARÀ RITENUTO VALIDO, SE NON SOTTOSCRITTO DA UN RAPPRESENTANTE DI CANON DEBITAMENTE AUTORIZZATO.

Se si desidera avere dei chiarimenti in merito al presente Contratto o si desidera contattare Canon per qualunque altra ragione, scrivere alla consociata locale.

LEES DEZE INFORMATIE ZORGVULDIG ALVORENS DE VERZEGELDE VERPAKKING VAN DE DISK TE OPENEN

LICENTIEOVEREENKOMST VOOR SOFTWARE VAN CANON

BELANGRIJK - LEES DEZE OVEREENKOMST ALVORENS DE VERZEGELDE VERPAKKING VAN DE DISK TE OPENEN! DOOR DE VERZEGELDE VERPAKKING VAN DE DISK TE OPENEN WORDT U GEACHT AKKOORD TE GAAN MET DEZE OVEREENKOMST.

Dit juridische document is een licentieovereenkomst tussen u en Canon Electronics Inc. ("Canon"). DOOR DE VERZEGELDE VERPAKKING VAN DE DISK TE OPENEN WORDT U GEACHT AKKOORD TE GAAN MET DE VOORWAARDEN VAN DEZE OVEREENKOMST. ALS U HIERMEE NIET AKKOORD WILT GAAN OPEN DE VERZEGELDE VERPAKKING VAN DE DISK DAN NIET EN BRENG DE CANON SCANNER, DE VERPAKKING VAN DE DISK MET DE SCANNERBESTURINGSSOFTWARE EN/OF DE HULPPROGRAMMA'S VOOR DE SCANNER DIE EIGENDOM ZIJN VAN CANON OF VAN DEGENE DIE AAN CANON LICENTIE VERLEEND HEEFT (DE "SOFTWARE") EN DE BIJBEHORENDE DOCUMENTATIE EN OVERIGE ARTIKELEN ONGEBRUIKT, ONGEOPEND EN ONUITGEPAKT TERUG NAAR DE PLEK WAAR U ZE GEKOCHT HEBT EN VRAAG UW GELD TERUG.

Als tegenprestatie voor het recht de SOFTWARE te mogen gebruiken, verklaart u zich aan de voorwaarden van deze overeenkomst te zullen houden.

1. LICENTIEVERLENING: Canon verleent u het persoonlijke, niet-exclusieve recht de SOFTWARE op slechts één enkele computer te gebruiken. Het is u toegestaan de SOFTWARE fysiek over te brengen van de ene computer naar een andere computer op voorwaarde dat de SOFTWARE nooit op meer dan één computer tegelijk gebruikt wordt.

Het is u niet toegestaan de SOFTWARE aan derden toe te wijzen, in sublicentie te geven, te verkopen, te verhuren, te leasen, uit te lenen of over te dragen of de SOFTWARE uit het land waar u deze oorspronkelijk gekocht hebt te vervoeren naar andere landen zonder de vereiste toestemming van de desbetreffende overheden, dan wel de SOFTWARE of de bijbehorende documentatie te kopiëren, vermenigvuldigen, vertalen of in een andere programmeertaal om te zetten tenzij dit uitdrukkelijk in de SOFTWARE of documentatie toegestaan wordt.

Behoudens uitdrukkelijke toestemming onder het toepasselijk recht, is het u niet toegestaan de SOFTWARE of de bijbehorende documentatie te wijzigen, aan te passen, te decompileren of anderszins de broncode ervan te herleiden of dit door een derde te laten doen.

2. RESERVEKOPIE: Het is u toegestaan één kopie van de SOFTWARE te maken als back-up of de SOFTWARE op het permanente opslagapparaat (bijv. een harde schijf) van uw computer te kopiëren en de originele disk te bewaren als back-up. Tenzij uitdrukkelijk toegestaan krachtens het toepasselijk recht betekenen alle andere vormen van kopiëren van de SOFTWARE een schending van deze overeenkomst. U moet de copyrightvermelding kopiëren en aangeven op de back-up.

3. ONDERSTEUNING EN UPDATES: Canon, met Canon gelieerde ondernemingen, distributeurs of dealers daarvan zijn niet verantwoordelijk voor het onderhoud van de SOFTWARE of hulpverlening aan u voor het gebruik van de SOFTWARE. Er worden geen updates, verbeterde versies dan wel ondersteuning verstrekt voor de SOFTWARE.

4. BEPERKTE GARANTIE EN NIET-AANSPRAKELIJKHEIDSVERKLARING: Canon, met Canon gelieerde ondernemingen, distributeurs of dealers daarvan verstrekken geen garanties over probleemloze werking of het ontbreken of verhelpen van storingen. De SOFTWARE-licentie wordt daarom verstrekt op basis van de actuele staat van de SOFTWARE bij aflevering zonder enige garanties. De diskette waarop de SOFTWARE is opgenomen wordt bij normaal gebruik gedurende een periode van negentig (90) dagen vanaf de aankoopdatum gegarandeerd tegen ondegdelijk materiaal of vakmanschap. De aankoopdatum dient aangetoond te worden met een kassabon of een vergelijkbaar bewijsstuk. De beperkte garantie geldt niet indien een defecte diskette het resultaat is van een ongeluk, misbruik of het verkeerde gebruik van de SOFTWARE en geldt uitsluitend voor de oorspronkelijke gebruiker van de SOFTWARE.

CANON, MET CANON GELIEERDE ONDERNEMINGEN, DISTRIBUTEURS OF DEALERS DAARVAN GEVEN GEEN ENKELE STILZWIJGENDE GARANTIE, WAARONDER GARANTIES BETREFFENDE DE VERHANDELBAARHEID OF GESCHIKTHEID VOOR EEN SPECIFIEK DOEL, MET BETREKKING TOT DE SOFTWARE OF DE BIJBEHORENDE DOCUMENTATIE.

NOCH CANON, NOCH MET CANON GELIEERDE ONDERNEMINGEN, DISTRIBUTEURS OF DEALERS DAARVAN ZIJN AANSPRAKELIJK VOOR EVENTUELE SCHADE WAARONDER VERVOLGSCHADE, WINSTDERIVING, KOSTEN OF ONGEMAK VAN ENIGERLEI AARD, ALS GEVOLG VAN OF VOORTVLOEIEND UIT DE SOFTWARE, DE BIJBEHORENDE DOCUMENTATIE OF HET GEBRUIK DAARVAN.

CANON, MET CANON GELIEERDE ONDERNEMINGEN, DISTRIBUTEURS OF DEALERS DAARVAN ZIJN NIET GEHOUDEN U TE VRIJWAREN VAN OF SCHADELOOS TE STELLEN VOOR EVENTUELE CLAIMS OF JURIDISCHE PROCEDURES DIE ZIJN INGEDIEND OF AANHANGIG GEMAAKT DOOR EEN DERDE OP GROND VAN DE BEWERING DAT DE SOFTWARE, DE BIJBEHORENDE DOCUMENTATIE OF HET GEBRUIK DAARVAN INBREUK ZOU MAKEN OP DE EVENTUELE INTELLECTUELE EIGENDOM VAN DE DESBETREFFENDE DERDE.

HETGEEN HIERBOVEN VERMELD IS, BEHELST DE VOLLEDIGE AANSPRAKELIJKHEID VAN CANON EN UW ENIGE VERHAALSRECHT IN VERBAND MET DE SOFTWARE EN DE BIJBEHORENDE DOCUMENTATIE.

5. DUUR: Deze overeenkomst wordt van kracht op het moment dat de verzegelde verpakking van de disk geopend wordt en blijft van kracht tot het moment van beëindiging. U kunt deze overeenkomst beëindigen door de SOFTWARE en eventuele kopieën daarvan te vernietigen. Deze overeenkomst eindigt ook als u niet voldoet aan een of meer bepalingen van deze overeenkomst. In dat geval kan Canon haar desbetreffende juridische rechten afdwingen en dient u de SOFTWARE en eventuele kopieën daarvan onmiddellijk te vernietigen.

6. OPMERKING VAN DE AMERIKAANSE OVERHEID BETREFFENDE BEPERKTE RECHTEN: De SOFTWARE wordt verstrekt met BEPERKTE RECHTEN. Voor het gebruik, de vermenigvuldiging of de openbaarmaking ervan gelden de beperkingen die vastgelegd zijn in subparagraaf (c) (1) (ii) van de Rights in Technical Data and Computer Software Clause in DFAR's 252.227-7013 dan wel subparagraaf (c) (1) en (2) van de Commercial Computer Software Restricted Rights Clause in FAR 52.227-19, zoals in het desbetreffende geval van toepassing is.

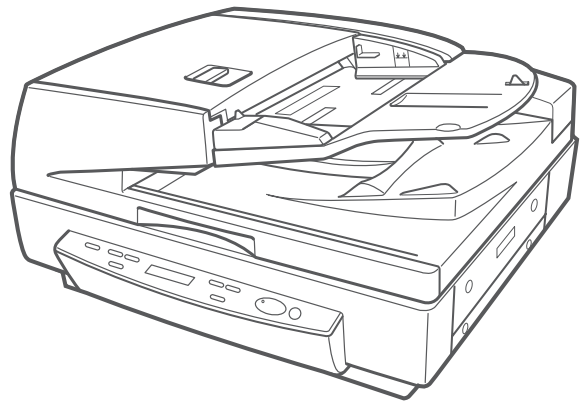
7. ONGELDIGHEID VAN LOSSE BEPALINGEN: Ingeval een bepaling van deze overeenkomst ongeldig, onwettig of nietig is of verklaard wordt door een bevoegd gerecht of tribunaal, vervalt de werking van de desbetreffende bepaling met betrekking tot de jurisdictie van het desbetreffende gerecht of tribunaal en wordt de geldigheid van de overige bepalingen van deze overeenkomst daardoor niet aangetast.

8. VERKLARING: DOOR DE VERZEGELDE VERPAKKING VAN DE DISK TE OPENEN VERKLAART U DEZE OVEREENKOMST GELEZEN EN BEGREPEN TE HEBBEN EN ERMEE AKKOORD TE GAAN. VERDER VERKLAART U DAT DEZE OVEREENKOMST DE VOLLEDIGE EN UITSLUITENDE OVEREENKOMST TUSSEN U EN CANON IS BETREFFENDE HET ONDERWERP VAN DEZE OVEREENKOMST EN DAT DEZE OVEREENKOMST ALLE EVENTUELE VOORSTELLEN OF EERDERE, MONDELINGE OF SCHRIFTELIJKE, OVEREENKOMSTEN EN ANDERE BERICHTGEVING TUSSEN U EN CANON MET BETREKKING TOT HET ONDERWERP VAN DEZE OVEREENKOMST VERVANGT. WIJZIGINGEN OP OF AANVULLINGEN VAN DEZE OVEREENKOMST ZIJN NIET GELDIG TENZIJ ZE ONDERTEKEND ZIJN DOOR EEN RECHTSGELDIGE VERTEGENWOORDIGER VAN CANON.

Indien u nog vragen hebt over deze overeenkomst of om andere redenen contact wilt opnemen met Canon, verzoeken wij u naar de plaatselijke vestiging van Canon te schrijven.

Canon

Document Scanner **DR-7080C** **INSTRUCTIONS**



Please read this manual before operating this unit. After you finish reading this manual, store it in a safe place for future reference.

International ENERGY STAR® Office Equipment Program



As an ENERGY STAR partner, Canon Electronics Inc. has determined that this product meets the ENERGY STAR guidelines for energy efficiency.

The International ENERGY STAR Office Equipment Program is an international program that promotes energy saving through the use of computers and other office equipment. The program backs the development and dissemination of products with functions that effectively reduce energy consumption. It is an open system in which business proprietors can participate voluntarily. The targeted products are office equipment such as computers, monitors, printers, fax machines, copiers and scanners. Their standards and logos are uniform among the participating nations.

NOTICE

- ① Copyright 2004 by CANON ELECTRONICS INC. All rights reserved. No part of this publication may be reproduced, transmitted, transcribed, stored in a retrieval system, or translated into any language or computer language in any form or by any means, electronic, mechanical, magnetic, optical, chemical, manual, or otherwise, without the prior permission of CANON ELECTRONICS INC.
- ② The contents of this manual are subject to change without notice.
- ③ Every effort has been made to ensure the accuracy of information presented in this manual. However, Canon Electronics Inc. and the subsidiaries on the back cover assume no responsibility for any errors or their consequences.
- ④ We do not assume any responsibility for damage resulting from operations regardless of item ③.

Trademarks and Registered Trademarks

- ENERGY STAR is a United States registered mark.
- Microsoft Windows® and Microsoft Windows NT® are registered trademarks of Microsoft Corporation in the United States and in other countries.
- Product names mentioned herein are for identification purposes only and may be trademarks and/or registered trademarks of their respective companies.

INTRODUCTION

Thank you for purchasing the Canon Document Scanner DR-7080C. Please read this manual thoroughly before operating the machine in order to familiarize yourself with its capabilities, and to make the most of its many functions. After reading this manual, store it in a safe place for future reference.

Conventions

This manual uses the following symbols and indications. Before you start reading this manual, read the following and familiarize yourself with their meanings.



Warnings are provided for your safety and contain extremely important information. Failure to observe the instructions provided in a warning could result in death or serious injury to yourself or your coworkers.



Caution notices are also provided for your safety and contain important information. Failure to observe the instructions provided in a caution notice could result in serious injury to yourself or your coworkers or damage to the equipment.



These important notes contain important information on procedures that must be followed or actions that must be avoided. Failure to observe a request could result in damage to the equipment or a malfunction.



Note

Notes provide additional tips or advice that can save you time and effort in using the scanner.

CONTENTS

INTRODUCTION	1
Conventions	1
Safety Precautions	5
Safe Operation	5
Installation Location	7
Power Supply	8
Opening and Closing the Feeder	8
Carrying	9

Chapter 1 Getting Ready

1.1 Features of the DR-7080C	12
1.2 Before Getting Started	14
Unpacking	14
Removing the Transportation Screw	15
Ferrite Core	15
1.3 Part Names	16
Feeder	16
Flatbed	17
Rear	18
Operation Panel	19
1.4 Job Function	20
1.5 Optional Products	21
Stamp Unit	21

Chapter 2 Connecting to a Computer

2.1 Checking Your Operating Environment	24
2.2 Connecting to a Computer	25
SCSI Connections	25
◆ SCSI Cards	25
◆ Connecting the SCSI Cable	26
◆ Attaching the Ferrite Core	26
◆ Setting the SCSI ID and Terminator	27
◆ Setting the SCSI Transfer Speed	29

USB Connections	29
◆ USB 2.0 Interface Cards	29
◆ Connecting a USB Interface Cable	30
Connecting the Power Cord	30
2.3 Turning ON or OFF the Power	31
Turning ON the Power	31
Recognizing the Scanner	32
Turning OFF the Power	34

Chapter 3 Using the Software

3.1 About the Software	36
3.2 Installing the Software	37
3.3 How to Use the Software	39
How to Display the ISIS/TWAIN Driver Help File	39
How to Start CapturePerfect	40
How to Start the Job Registration Tool	41
3.4 Uninstalling the Software	43

Chapter 4 Using the Scanner

4.1 Documents	46
Types of Documents	46
Feeder Capacity	47
4.2 Placing Documents onto the Scanner	48
Loading a Document into the Feeder	48
Positioning a Document on the Flatbed (Platen Glass)	51
4.3 Document Feeding and Scanning	54
Scan Procedure	54
◆ Standard Feeding	55
◆ Panel Feeding	56
◆ Automatic Feeding	57
4.4 Other Scanning Techniques	59
Using the Job Mode for Scanning	59
◆ Setting the Event Function	60
Using the Count Only Mode	63
Using Patch Code Sheets	64
◆ Patch Code Sheets	64
◆ Types of Patch Code Patterns	65
◆ How to Use Patch Code Sheets	66

Chapter 5 User Modes

5.1 About the User Modes	70
User Mode Functions	70
How to Set the User Modes	72

Chapter 6 Troubleshooting

6.1 When the Scanner Is Not Recognized	74
SCSI Connections	74
USB Connections	76
6.2 Clearing Paper Jams	77
Clearing a Paper Jam	77
Paper Jam Causes	81
6.3 When the Scanned Image Is Not Normal	82
6.4 Display Messages	83
Error Messages	83
Scanner Status Messages	85
6.5 Troubleshooting	86

Chapter 7 User Maintenance

7.1 Changing the Stamp Cartridge	90
7.2 Daily Cleaning	92
Cleaning the Main Unit	92
Cleaning the Flatbed (Platen Glass) and Pressure Board (Black)	93
Cleaning the Feeder	94
Cleaning the Power Plug	98

Appendix

Specifications	100
Specification for the Scanner	100
Options	101
Consumables	101
Exterior Dimensions	102
Index	103

Safety Precautions

Safe Operation

When you are working around the scanner, follow these precautions to avoid the hazards of fire and electrical shock:



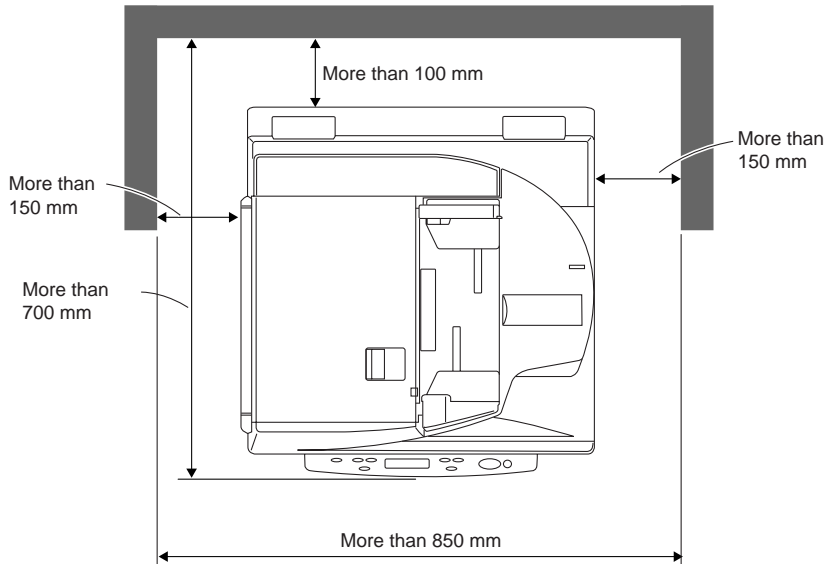
- Never install and operate the scanner near flammable substances such as alcohol, paint thinner, benzene, or any other type of volatile solution.
- Never damage or modify the power cord, and never place heavy objects on the power cord.
- Always make sure that your hands are dry when you are handling the power cord or plug. Never grasp the plug when your hands are wet.
- Never plug the scanner into a multiplug power strip.
- Never bundle, wrap, or tie the power cord around itself or another object. Connect the plug securely to the power source.
- Use only the power cord and plug provided with the scanner.
- Never attempt to disassemble or modify the scanner.
- Never use flammable aerosol products near the scanner.
- Before you clean the scanner, turn OFF the power and disconnect the power cord from the power outlet.
- To clean the scanner exterior, use a firmly wrung cloth moistened slightly with water or mild detergent. Never use any type of volatile solution such as alcohol, benzene, or paint thinner.
- If you hear a strange sound, detect smoke or abnormal heat, sense vibration, or smell odd odors around the scanner, turn OFF the power immediately and disconnect the power cord from the power outlet. Call for service immediately.
- Handle the scanner with care. Avoid shocks and vibrations to the scanner caused by reckless handling. If you suspect the scanner has been accidentally damaged, turn OFF the power immediately and disconnect the power cord from the power outlet. Call for service immediately.
- Before you move the scanner, always turn OFF the power and disconnect the power cord from the power outlet.
- The scanner weighs 33.6 kg. Two people must carry the scanner. You may drop the scanner, or pinch your fingers if you attempt to carry it by yourself.
- **Notice to Cardiac Pacemaker Users**
This product generates a weak magnetic field. If you use a cardiac pacemaker, move away from product in the event that you notice any unusual symptoms. Also, please consult a cardiologist.



CAUTION

- To avoid damage to the scanner, never place the scanner on an unstable or vibrating surface. The scanner may tip or fall over, and cause an injury.
- To avoid overheating and causing a fire, never block the air vents on the rear and side of the scanner.
- Keep all liquids, beverages, or any type of liquid, and clips, staples, necklaces, or other metal objects away from the scanner. If you accidentally spill liquid or drop a metal object into the scanner, turn OFF the power immediately and disconnect the power cord from the power outlet. Call for service immediately.
- Never install the scanner in humid or dusty locations. Doing so might cause a fire or electrical shock.
- Never place heavy objects on top of the scanner. Such objects may tip or fall over, and cause an injury.
- When you remove the power cord, grip it by the plug head. Never attempt to disconnect the power cord from the power outlet by pulling on the power cord. Doing so might expose or break the core leads, damage the power cord, and cause a fire or electrical shock.
- Keep the area around the power outlet clear of all obstacles so you can disconnect the power cord easily at all times.
- Never spill water or any type of volatile solution (alcohol, benzene, paint thinner) into the scanner. Doing so might cause a fire or electrical shock.
- When the scanner is not being used for a long time, disconnect the power cord from the power outlet.
- Avoid wearing loose fitting clothing, dangling jewelry, long ties, or even long hair that could become entangled with moving parts, especially the rollers that feed the scanner. If such objects become entangled, immediately disconnect the power plug from the power outlet to stop the scanner.
- Be very careful when you are loading a document or removing a paper jam. You may be injured unexpectedly. For example, the paper edges may cut your fingers.
- Do not open the feeder cover while the scanner is operating. Doing so might result in a malfunction or injury.
- Do not directly touch the pins and contacts on the scanner connector with your hands. Doing so might result in a malfunction.
- Open the feeder carefully and slowly, taking care to avoid letting it fall over backwards. Failure to do so might result in a malfunction or personal injury.
- Close the feeder carefully and slowly, taking care to avoid pinching your hands. Failure to do so might result in a malfunction or personal injury.
- When scanning a thick book or similar item from the flatbed (platen glass), avoid pressing down hard on the feeder. Doing so might damage the glass and create the risk of a malfunction or personal injury.
- Never place any object other than documents to be scanned onto the scanner's flatbed (platen glass). Doing so might result in a malfunction or personal injury.

Installation Location



ENGLISH

For operation, maintenance and ventilation, make sure that there is enough space around the scanner, as shown in the illustration above.

Avoid placing the scanner in the following places. Doing so may cause a malfunction and adversely affect the scanner or your computer.

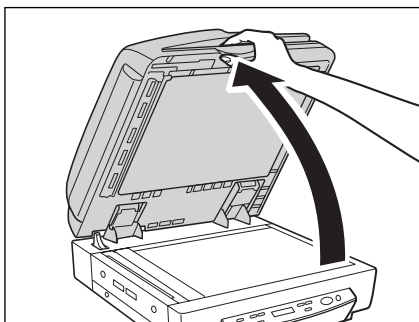
- Places exposed to direct sunlight
If installation in such places is unavoidable, provide a curtain or similar object to shade the scanner.
- Places subject to dust and fumes
Dust and cigarette fumes adversely affect the components inside the scanner.
- Near running water, a heat source, water vapor, or in an area such as a laboratory exposed to ammonia gas, paint thinner, or other volatile chemicals.
- Places subject to vibration and strong shock
- Places subject to rapid changes in temperature or humidity
Condensation occurring inside the scanner may impair scan image quality. Place the scanner in a room that is well within the following range:
Room temperature 15°C to 30°C (59°F to 86°F)
Relative humidity 25% to 80% RH
- Near electronic equipment or heavy equipment that generates a strong magnetic field, such as a speaker, TV, or radio.

Power Supply

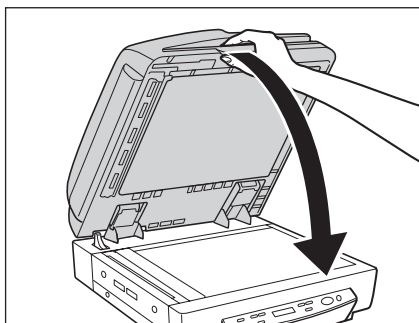
- Be sure to connect to an AC 220-240 V (50/60 Hz) power supply, according to your region's requirement.
- Ensure that the scanner is connected to an independent power outlet. Do not plug the scanner into an outlet shared with another device. If you use an extension cord, pay attention to the total amperage of the cord.
- If you are unsure of anything relating to the power supply, contact your service representative or the power company.
- Never place an object on top of the power cord or step on the power cord.
- Never bundle the power cord or wrap the cord around an object, such as a table leg.
- Do not tug the power cord. When you remove the power cord, grip it by the plug head.
- Keep the area around the power outlet free of obstacles.

Opening and Closing the Feeder

- Open the feeder carefully and slowly, taking care to avoid letting the feeder fall over backwards.

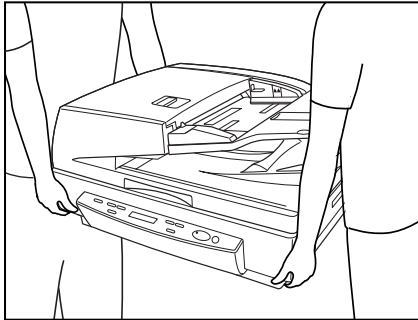


- Close the feeder carefully and slowly, taking care to avoid pinching your fingers.



Carrying

Take care when moving the scanner. Two people should hold the scanner firmly on opposite sides when lifting it.



WARNING

- The scanner weighs 33.6 kg. Two people must carry the scanner. You may drop the scanner, or pinch your fingers if you attempt to carry it by yourself.
- When moving the scanner, be sure to turn OFF the power and remove any cables. If the cables are not removed before moving the scanner, you may damage the plugs or connectors by forcibly pulling them out.
- **Notice to Cardiac Pacemaker Users**
This product generates a weak magnetic field. If you use a cardiac pacemaker, move away from product in the event that you notice any unusual symptoms. Also, please consult a cardiologist.

Chapter 1

Getting Ready

This chapter describes the features of the scanner, what's in the box, and the names and functions of parts on the scanner.

1.1 Features of the DR-7080C	12
1.2 Before Getting Started	14
Unpacking	14
Removing the Transportation Screw	15
Ferrite Core	15
1.3 Part Names	16
Feeder	16
Flatbed	17
Rear	18
Operation Panel	19
1.4 Job Function	20
1.5 Optional Products	21
Stamp Unit	21



Features of the DR-7080C

The DR-7080C is a desktop ADF/flatbed scanner for high-speed scanning of large volume documents. The following are the main features of the DR-7080C.

- **Black and white, grayscale, and 24-bit color output**
Support for black and white, grayscale, and 24-bit color output.
- **High-speed scanning**
The feeder supports scanning of A4/LTR-size documents at speeds up to 70 pages per minute.
- **Duplex (two-side) scanning**
When scanning both sides of document pages with the feeder, the front is scanned first. After that the page is turned over automatically and the back is scanned.
- **Flatbed scanning**
Flatbed scanning is also supported for thin paper, paper that does not feed properly, magazines, bound documents, and other documents that cannot be scanned using the feeder.
- **Large capacity, reliable feeding**
 - A large capacity paper feed tray allows loading of up to 100 A4/LTR-size document pages.
 - The document size is detected and adjusted automatically, which eliminates the need for troublesome manual settings. Document pages of different sizes can be mixed together and loaded for a single scan operation.
- **Job Function^{*1}**
To begin scanning, you need only to select a job with the [Job] keys of the scanner, and then press the [Start] key. Scanned images can be sent directly to a specific folder, printer, or e-mail address. (See “Job Function,” on p. 20.)
- **Skew correction**
This feature automatically detects when a document page is fed unevenly, and automatically straightens it.
- **Text Orientation Recognition**
The DR-7080C can detect the text orientation in scanned images and rotate the images in 90° increments to normalize text orientation.

- **High durability**

A highly durable design provides scanning for up to 4 million scans.

- **Advanced Text Enhancement**

This feature eliminates the background surrounding the text. This makes it easier to read the text on documents that are printed on a light colored background, or are written in pencil, or if the text is a color other than black.

- **Dropout color**

This feature lets you skip ("drop out") a specific color when scanning.

- **Stamping (option)**

This feature automatically marks the trailing edge of a scanned document page with a stamp to indicate that it has been scanned. (See "Optional Products," on p. 21.)

*1 This function is not supported on a computer that is running Windows NT.

1.2

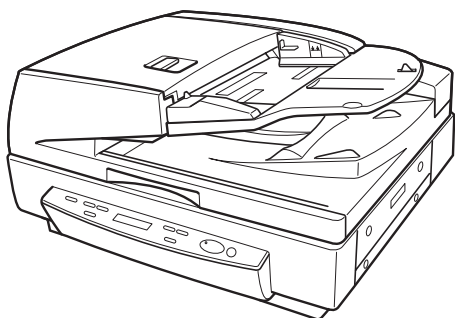
Before Getting Started

Make sure you perform the following procedures before using the DR-7080C for the first time.

- Unpacking
- Removing the Transportation Screw
- Attaching the Ferrite Core

Unpacking

Make sure that you have everything. Check every item you have removed from the box. If any items are missing, contact your sales representative.



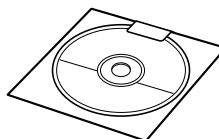
DR-7080C



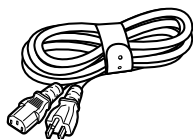
Instructions (this manual)



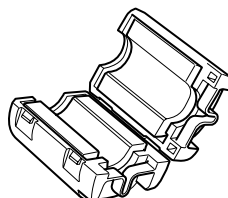
Quick Reference



Setup Disc



Power Cord*

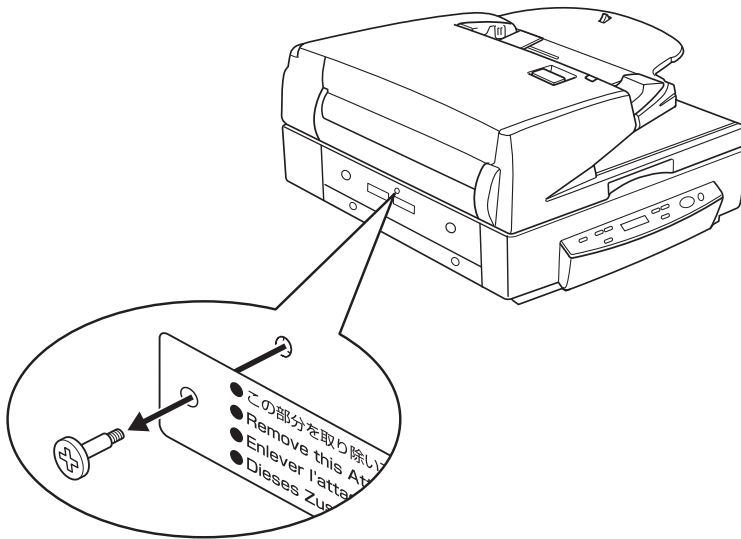


Ferrite Core

* The power cord varies according to country of purchase.

Removing the Transportation Screw

A transportation screw is installed at the factory to lock the scanner's optical unit in place and protect it against damage caused by vibration and other forces during shipment. You must remove the transportation screw before trying to use the scanner.



Important

- If the transportation screw is not removed, then when the scanner is turned ON "Please wait" appears on the display panel and remains there unchanged. Turn OFF the scanner and remove the transportation screw.

Ferrite Core

When connecting to another SCSI device sequentially for use after connecting a SCSI cable to the scanner, attach the supplied ferrite core to the SCSI cable. (See "Attaching the Ferrite Core," on p. 26.)



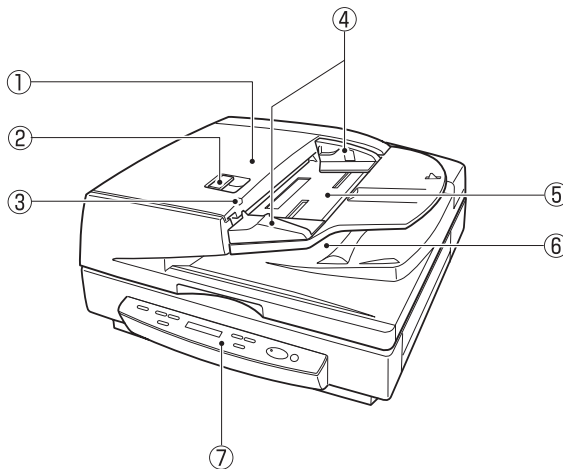
CAUTION

- When connecting to another SCSI device sequentially after connecting a SCSI cable to the scanner, be sure to attach the ferrite core to the SCSI cable. If you use the scanner without attaching the ferrite core, radio wave interference may occur.

1.3 Part Names

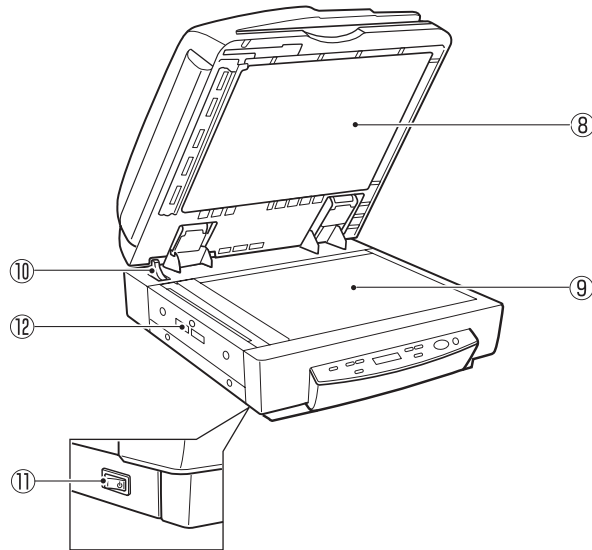
This section describes the names and functions of each part. Before you connect the DR-7080C, take a few minutes to familiarize yourself with the main parts.

Feeder



- ① **Feeder Cover**
Open this cover to clear document jams and clean the rollers. (See pp. 77, 90.)
- ② **Opening Lever**
Operate this release lever when opening or closing the feeder cover.
- ③ **Document Set Indicator**
This indicator lights when there is a document in the document feeder tray. (See p. 49.)
- ④ **Slide Guide**
Adjust this guide to the marking on the document size label that indicates the applicable document size. (See p. 48.)
- ⑤ **Document Feeder Tray**
Load documents to be scanned here. (See p. 49.)
- ⑥ **Document Eject Tray**
Scanned documents are ejected here. Raise the document feeder tray to remove ejected documents. (See p. 50.)
- ⑦ **Operation Panel**
(See p. 19.)

Flatbed



ENGLISH

⑧ Pressure Board (Black)

This board presses the document page against the glass during scanning.
(See p. 89.)

⑨ Flatbed (Platen Glass)

When placing the document onto the platen glass, align it with the arrow in the upper left corner of the glass. (See p. 51.)

⑩ Opening Sensor

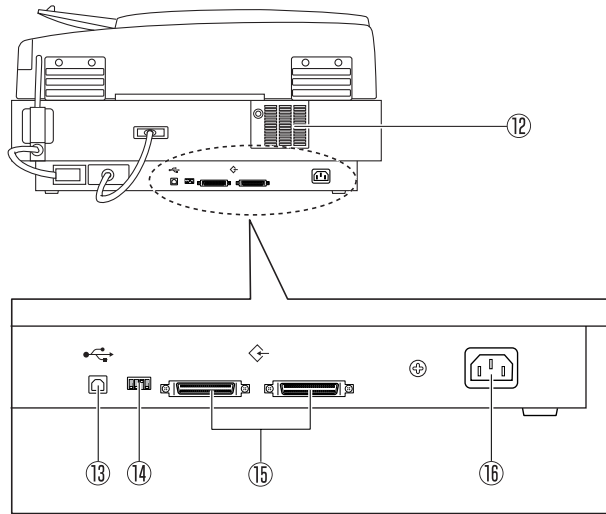
This sensor detects whether the feeder is open or closed. (See p. 51.)

⑪ Power Switch

(See p. 31.)

⑫ Air Vents

Rear



12 Air Vents

13 USB Connector

Connect a Hi-Speed USB 2.0 compatible USB cable here. (See p. 30.)

14 DIP Switches

Configure these switches to specify the SCSI ID or terminator ON or OFF. (See p. 26.)

15 SCSI Connectors

Connect a SCSI cable (50-pin half pitch, pin type) here. (See p. 26.)

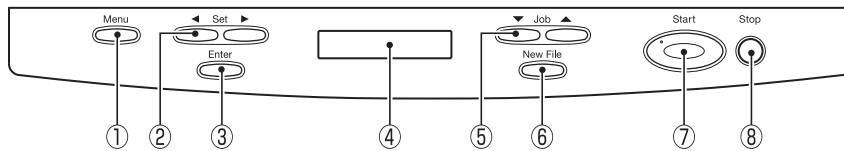
16 Power Cord Connector

Connect the provided power cord here.



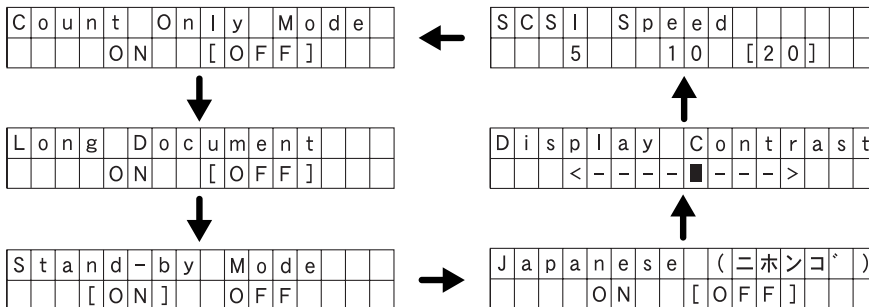
- Never touch the cables on the left side of the back panel. Disconnection of cables can cause a malfunction of the scanner.
- Take care to ensure that the vents never become blocked. Blocked vents can lead to heat build-up inside the scanner and create the risk of fire.

Operation Panel



① Menu Key

Press this key to cycle the display through the various user modes, as shown below. (See “About the User Modes,” on p. 68.)



② Set Keys

Use these keys to change the setting of the currently displayed user mode. (See p. 72.)

③ Enter Key

Press this key to register the currently displayed user mode setting. (See p. 72.)

④ Display Panel

Displays the number of scanned pages, error codes, etc.

⑤ Job Keys

Use these keys to scroll through registered job numbers (01 through 99) on the display panel. (See “Job Function,” on p. 20.) Pressing the [Start] key while a job number is displayed starts scanning of the document and forwards the scanned image to the registered job.

⑥ New File Key

This key is active for applications that support batch separation. This key lights when pressed or in accordance with the application's batch separation settings. Scanning the next document while this key is lit causes the scanned image to be stored in a different file or folder than the previously scanned document.

⑦ Start Key

The Start key lamp lights when the key is enabled by the Count Only Mode or the application's settings. Pressing the [Start] key while its lamp is lit causes scanning to start.

⑧ Stop Key

Pressing this key stops an ongoing scanning operation. This key is also used to cancel a mode setting and clear an error indicator from the counter display area.

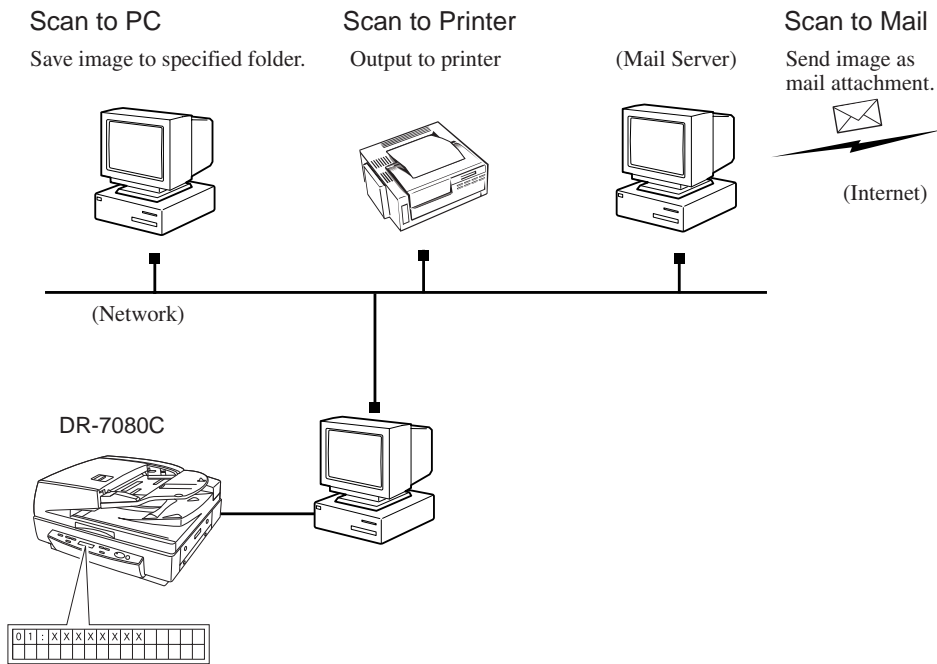
1.4 Job Function

The DR-7080C comes with a “Job function” that makes it possible to perform scanning without starting a scanning application. The Job function lets you use the operation panel to perform scanning and forward image files to destinations in accordance with the currently selected job.

The Job function has the capabilities listed below, and jobs can be registered using Job Registration Tool. (See “How to Start the Job Registration Tool,” on p. 41.)

- Images can be saved to a shared folder or other specified folder (Scan to PC).
- Images can be sent as e-mail attachments (Scan to Mail).
- Images can be output to a specified printer (Scan to Printer).

For details about using the Job function, see “Using the Job Mode for Scanning,” on page 59.



Note

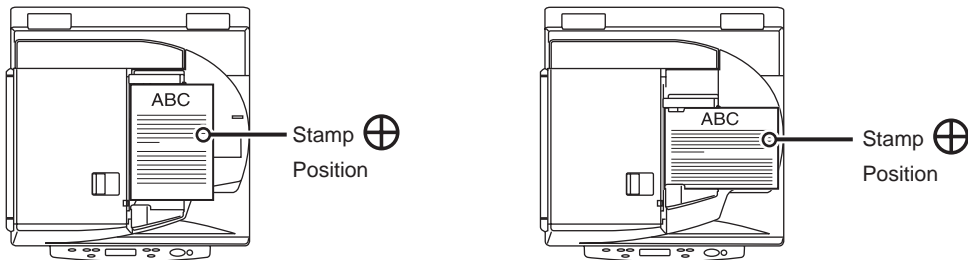
The Job function is not supported on a computer that is running Windows NT.

1.5 Optional Products

The following options can be purchased and used on the DR-7080C, if they are necessary. Contact your sales representative.

Stamp Unit

The stamp unit affixes a “scanned” stamp on document pages that are scanned using the feeder. The application can be used to turn stamping on or off. The stamp is a circle that has a diameter of about 3 mm, with a cross in the center. It is stamped on the scanned side of the document page, about 7 mm from the trailing edge of the document page.



Note

- The stamp pattern is fixed and cannot be changed.
- In the case of duplex scanning, both sides of the document page are stamped.
- The cross in the center of the stamp rotates during stamping.

Chapter 2

Connecting to a Computer

This chapter describes how to connect the scanner to a computer, and includes information about what you need to do to get Windows to recognize the scanner.

2.1 Checking Your Operating Environment	24
2.2 Connecting to a Computer	25
SCSI Connections	25
USB Connections	29
Connecting the Power Cord	30
2.3 Turning ON or OFF the Power	31
Turning ON the Power	31
Recognizing the Scanner	32
Turning OFF the Power	34

2.1

Checking Your Operating Environment

Your computer system must meet the following conditions to use the DR-7080C.

- **IBM PC/AT or compatible machines that meet the following specifications:**
 - Intel Celeron 733 MHz or faster
 - 256 MB main memory or more (recommended)
 - 100 MB or more of free space on the hard disk
- **SCSI card that is compatible with this scanner or Hi-Speed USB 2.0 interface card (See “Connecting to a Computer,” on p. 25.)**
- **Monitor that can display at a resolution of 1024 x 768 (XGA) or greater is recommended.**
- **One of the following operating systems:**
 - For SCSI**
 - Microsoft Windows 98SE
 - Microsoft Windows Me
 - Microsoft Windows NT 4.0 Workstation SP6
 - Microsoft Windows 2000 Professional SP4
 - Microsoft Windows XP SP1
 - For USB**
 - Microsoft Windows 98SE
 - Microsoft Windows Me
 - Microsoft Windows 2000 Professional SP4
 - Microsoft Windows XP SP1
- **Either an ISIS (compatible) or a TWAIN (compatible) application that operates on one of the operating systems noted above.**



- The DR-7080C does not support operation under Windows 95.
- The Job function is not supported on a computer that is running Windows NT. If you want to use the Job function, run the scanner with a computer running a supported operating system other than Windows NT.
- Use the latest USB 2.0 driver when using USB connections. Contact your sales representative.
- If the CPU, memory, SCSI card, or USB interface card does not meet the recommended specifications, the scanning speed may slow down or the time required to transfer data may increase.

2.2

Connecting to a Computer

There are two ways to connect the scanner to your computer, SCSI or USB. Use the method that is compatible with your computer system.



CAUTION

- Do not turn OFF the scanner or remove any interface cables when an application is running.
- Do not connect both SCSI and USB interface cables at the same time.
- When connecting to another SCSI device sequentially after connecting a SCSI cable to the scanner, be sure to attach the ferrite core to the SCSI cable. If you use the scanner without attaching the ferrite core, radio wave interference may occur.
- Turn OFF the computer and the scanner before changing the cable format.

ENGLISH

SCSI Connections

Connect the scanner to the computer.



Note

To connect the scanner with a SCSI cable, you will need the following items that are not included in the package:

- SCSI card
 - Check that the SCSI card is installed on your computer.
 - Use one of the recommended SCSI cards.

- SCSI cable
 - The scanner's SCSI connector is a half-pitch 50-pin (pin type) connector. Check the shape of the connector on your computer's SCSI card or on the SCSI device connected to your computer, and prepare a SCSI cable that is compatible with the connector that can be connected to the scanner.

◆ SCSI Cards

Be sure to use one of the recommended SCSI cards when connecting the scanner with a SCSI cable. The recommended SCSI cards are listed below.

Recommended SCSI cards

Manufacturer: Adaptec

Product names: AHA-2930U, AHA-2940AU, ASC-19160, ASC-29160, APA-1480



Important

Be sure to follow the installation procedure in your computer's operation manual when installing the SCSI card on your computer.

◆ Connecting the SCSI Cable

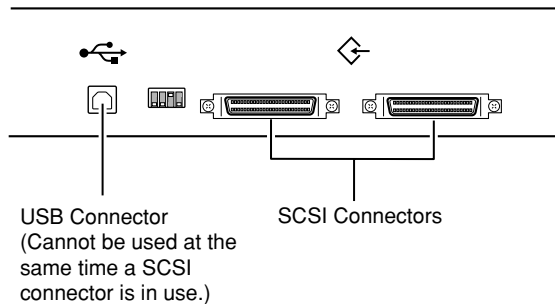


CAUTION

- The SCSI cable should only be as long as the rating for the SCSI card being used. If the SCSI cable is longer than the rated length, the scanner may not operate correctly.
- Before you connect the SCSI cable, make sure that the scanner and the computer are turned OFF.
- Do not connect both SCSI and USB interface cables at the same time.

Connect your computer to the scanner using the SCSI cable.

Two SCSI connectors are located on the rear of the scanner. Insert the SCSI cable from the computer into one of the connectors on the bottom of the scanner. To connect another SCSI device to the computer, insert the other SCSI cable into the vacant SCSI connector on the rear of the scanner, and connect the other end of the SCSI cable into the SCSI device in a daisy chain.



◆ Attaching the Ferrite Core

When connecting to another SCSI device sequentially for use after connecting a SCSI cable to the scanner in a daisy chain, attach the supplied ferrite core at the specified location. (See "Location for attaching ferrite core," on p. 27.)

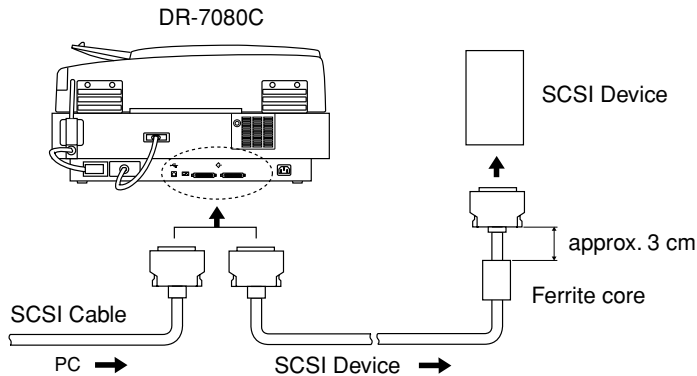


CAUTION

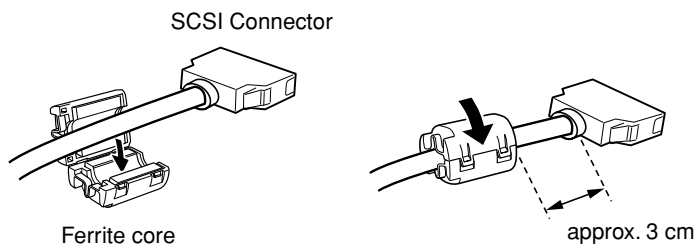
- When connecting to another SCSI device sequentially after connecting a SCSI cable to the scanner, be sure to attach the ferrite core to the SCSI cable. If you use the scanner without attaching the ferrite core, radio wave interference may occur.

Location for attaching ferrite core

Attach the ferrite core to the SCSI cable connecting the scanner to the next SCSI device.



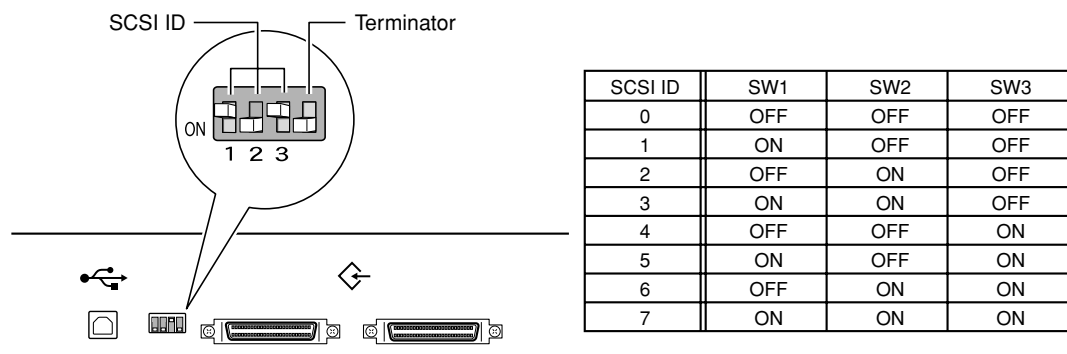
Clamp the ferrite core on the SCSI cable approximately 3 cm from the connector of the next SCSI device to be connected, closing it until you hear a clicking sound.



◆ Setting the SCSI ID and Terminator

Set the SCSI ID and the terminator on the DIP switches located between the SCSI connectors and the USB connector.

Move the DIP switch up to turn it OFF and move it down to turn it ON.



Set the SCSI ID referring to the table above.

Set unique SCSI IDs to any other built-in SCSI devices or SCSI devices connected to the computer.



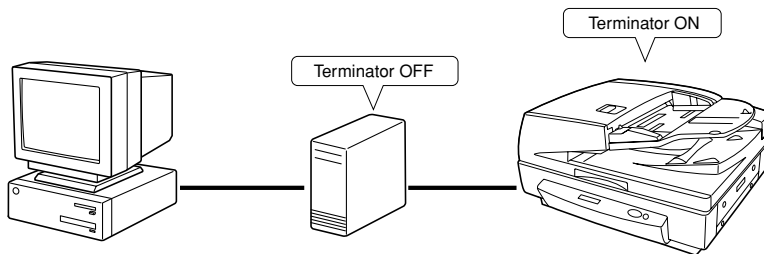
- The SCSI ID default is set to 2.
- Assign SCSI ID numbers ranging from 0 to 7 for each SCSI device. Do not select 7 as this is normally assigned to the SCSI controller. If a SCSI hard disk is mounted, do not use 0 and 1. Normally 0 and 1 are assigned for hard disks.

Set the terminator on the last SCSI device on a daisy chain to ON.

<When only the scanner is connected to your computer, or when another SCSI device is connected on a daisy chain and the scanner is the last SCSI device on the end of the daisy chain>

Set the terminator switch on the scanner to ON.

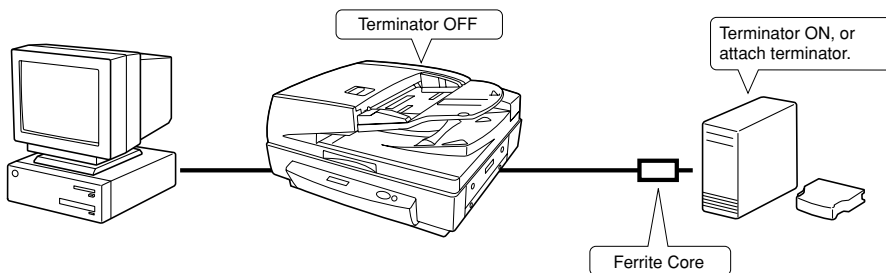
In such a connection, be sure to set the terminator on all other SCSI devices to OFF.



<When another SCSI device is connected as the last device of the daisy chain>

Set the terminator switch on the scanner to OFF.

In such a connection, set the terminator on the SCSI device connected as the end device to ON.



When connecting to another SCSI device sequentially after connecting a SCSI cable to the scanner, be sure to attach the ferrite core to the SCSI cable. If you use the scanner without attaching the ferrite core, radio wave interference may occur.

◆ Setting the SCSI Transfer Speed

When the scanner is hooked up with a SCSI cable, the scanner may not operate correctly depending on the length of the cable and the SCSI card being used. In this case, change the scanner's transfer speed in the user modes. (See "About the User Modes," on p. 70.)

USB Connections

Connect the scanner to the computer.



Important

- To connect the scanner with a USB interface cable, you will need the following items that are not included in the package.
 - USB interface cable
Use an interface cable that supports Hi-Speed USB 2.0.
 - USB interface card
Use an extended USB interface card that is compatible with Hi-Speed USB 2.0 and operationally tested by Canon.
- Turn the SCSI terminator on, even if you are using USB cables. If you use the scanner with the SCSI terminator turned OFF, the scanner might not operate correctly. (See "Setting the SCSI ID and Terminator," on p. 27.)

◆ USB 2.0 Interface Cards

Be sure to use one of the recommended USB 2.0 interface cards when connecting the scanner with a USB interface cable. The recommended USB 2.0 interface cards are listed below.

Recommended USB 2.0 interface cards

Manufacturer: Adaptec
 Product: USB 2 Connect 2000LP (AUA-2000)
 USB 2 Connect 3100 (AUA-3100LP)
 USB 2 Connect 5100 (AUA-5100)
 USB 2 Connect for Notebooks (AUA-1420)



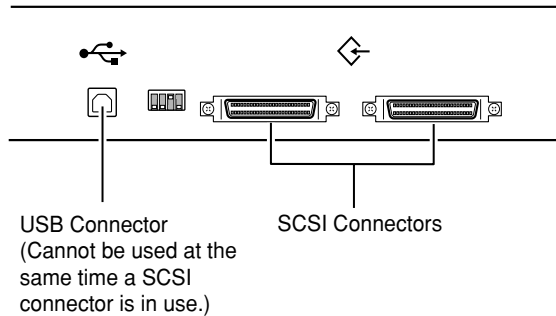
Important

- Be sure to follow the installation procedure in your computer's operation manual when installing the USB 2.0 interface card on your computer.
- Use the most recent USB 2.0 driver provided by Adaptec or Microsoft.
- Windows NT operating system does not support USB. Use a SCSI cable to connect the scanner to computers with the Windows NT operating system.
- Use a USB hub that supports USB 2.0 if you need to use a USB hub.
- This scanner has passed the Hi-Speed USB 2.0 verification test. However, it may not function properly even when Hi-Speed USB 2.0 is built-in to a computer as standard.
- Scan speed may slow down when Hi-Speed USB 2.0 is not supported.

◆ Connecting a USB Interface Cable



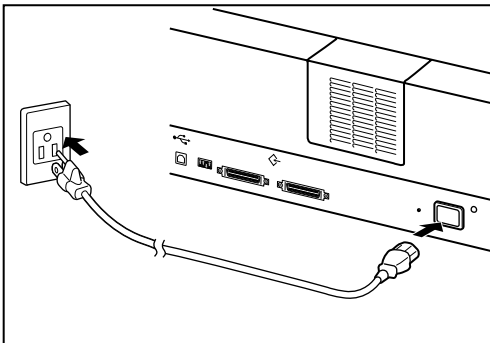
Do not connect both a SCSI cable and USB interface cable at the same time.



Connecting the Power Cord

Connect the power cord.

Be sure to use only the power cord provided with the scanner.



When connecting the power cord, follow these precautions. Failure to do so might cause a fire or electrical shock.

- Never grasp the plug when your hands are wet.
- Never plug the scanner into a multiplug power strip.
- Never bundle or tie the power cord around itself or another object. Connect the plug securely to the power source.
- Use only the power cord and plug provided with the scanner.
- Before you connect the power cord, be sure to turn OFF the power.
- Be sure to connect to an AC 220-240 V (50/60 Hz) power supply, according to your region's requirement.
- Do not plug the scanner into an outlet shared with another device. If you use an extension cord, pay attention to the total amperage of the cord.

2.3 Turning ON or OFF the Power

Follow the procedures below to turn ON or OFF the scanner power.

Turning ON the Power



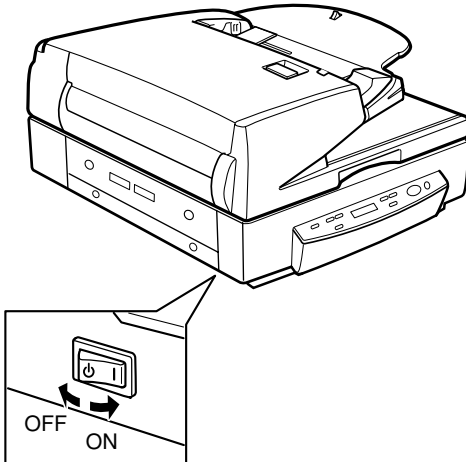
Important

Be sure to turn ON the power of all connected SCSI devices before you turn ON the computer.

ENGLISH

1 Turn ON the scanner.

The illustration below shows the location of the power switch.



➔ Turning ON the scanner causes the display panel to appear as shown below.

R	e	a	d	y															
												0	0	0	0	0			



WARNING

If you hear a strange sound, detect smoke or abnormal heat, sense vibration, or smell odd odors around the scanner, turn OFF the power immediately and disconnect the power cord from the power outlet. Contact your service representative immediately. Failure to do so might cause a fire.

2 Turn ON the computer.



Note

You will need to install the scanner device driver when you start Windows the first time after you connect the scanner to your computer. (See "Recognizing the Scanner," on p. 32.)

Recognizing the Scanner

If you are using Windows 98/Me or Windows 2000/XP, then the first time that you turn ON your computer after connecting this scanner to your computer, Windows Plug and Play function automatically displays a screen prompting you to install the scanner driver. Follow the instructions on the screen to proceed with the installation. (The name of the installation dialog varies depending on the Windows operating system.)

- **If you are using Windows 98SE, the [Add New Hardware Wizard] dialog box appears.**
 1. Click the [Next] button.
 2. Select [Search for the best driver for your device. (Recommended).], and then click the [Next] button.
 3. Insert the setup disc into the computer's CD-ROM drive.
 4. Select [Specify a location], enter "D:\INF" (assuming that "D" is assigned to your CD-ROM drive), and then click the [Next] button.
 5. Click the [Next] button.
 6. Click the [Finish] button.

- **If you are using Windows Me, the [Add New Hardware Wizard] dialog box appears.**
 1. Select [Specify the location of the driver (Advanced)], and then click the [Next] button.
 2. Insert the setup disc into the computer's CD-ROM drive.
 3. Select [Search for the best driver for your device. (Recommended).], and then select [Specify a location]. Enter "D:\INF" (assuming that "D" is assigned to your CD-ROM drive), and then click the [Next] button.
 4. Click the [Next] button.
 5. Click the [Finish] button.

- **If you are using Windows 2000 Professional, the [Found New Hardware Wizard] dialog box appears.**
 1. Click the [Next] button to proceed to the [Install Hardware Device Drivers] screen.
 2. Select [Search for a suitable driver for my device (recommended)], and then click the [Next] button to proceed to the [Locate Driver Files] screen.
 3. Select [Specify a location], and then click the [Next] button.
 4. Insert the setup disc into the computer's CD-ROM drive.
 5. Enter "D:\INF" (assuming that "D" is assigned to your CD-ROM drive), and then click the [OK] button.
 6. In the [Driver Files Search Results] screen, click the [Next] button.
 7. If the message "Digital Signature Not Found" appears, click [Yes] to continue installation.
 8. On the [Completing the Found New Hardware Wizard] screen, click the [Finish] button.

● **If you are using Windows XP, the [Found New Hardware Wizard] dialog box appears.**

1. Insert the setup disc into the computer's CD-ROM drive.
2. In the [Welcome to the Found New Hardware Wizard] screen, select [Install from a list or specific location (Advanced)], and then click the [Next] button.
3. Select [Search for the best driver in these locations], and then clear the [Search removable media (floppy, CD-ROM...)] check box. Select [Include this location in the search], enter "D:\INF" (assuming that "D" is assigned to your CD-ROM drive), and then click the [Next] button.
4. Click the [Continue Anyway] button in the [Hardware Installation] dialog box.
5. Click the [Finish] button in the [Completing the Found New Hardware Wizard] screen.



Note

- Although a message appears in the [Hardware Installation] dialog box indicating that the driver "has not passed Windows logo testing," this is not a problem.
- The DR-7080C will be registered as "CANON DR-7080C SCSI" or "CANON DR-7080C USB" in the "Imaging Device" directory.
- Note that the SCSI connection device name is different from the USB connection device name. If you change from one type of connection to another, Windows will have to recognize the scanner again. The first time you turn ON the computer after changing the connection method, perform the device driver installation procedure from the beginning again.



Important

If you cancel device driver installation part way through, you will not be able to use the Job function. (See "Job Function," on p. 20.) Always perform the entire device driver installation procedure all the way to the end.

Turning OFF the Power

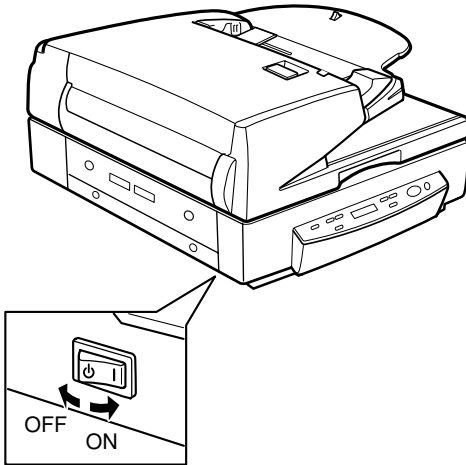


Important

If you are using a SCSI connection, turn OFF the computer first, before turning OFF the scanner.

1 Turn OFF the computer.

2 Turn OFF the scanner.



CAUTION

- Wait at least 10 seconds before turning ON the scanner again.
- For your safety, disconnect the power plug from the power outlet if you are not using the scanner for a long time.

Chapter 3

Using the Software

This chapter describes how to install and use the ISIS/TWAIN driver, CapturePerfect, and Job Registration Tool that come packaged with the scanner.

3.1 About the Software	36
3.2 Installing the Software	37
3.3 How to Use the Software	39
How to Display the ISIS/TWAIN Driver Help File	39
How to Start CapturePerfect.....	40
How to Start the Job Registration Tool	41
3.4 Uninstalling the Software	43

3.1

About the Software

The following software applications are provided on the setup disc that is packaged with the scanner. Be sure to open and read the Readme.txt file on the setup disc before installing the software.

- **ISIS/TWAIN driver**

This driver allows the scanner to use ISIS (Image and Scanner Interface Specification) compatible applications or TWAIN (Tool Without An Interesting Name) compatible applications to scan documents. Be sure to install the ISIS/TWAIN driver to use this scanner.

- **CapturePerfect**

This is a TWAIN compatible application for scanning images. Install it if necessary.

- **Job Registration Tool**

Job Registration Tool is a TWAIN-compliant application for registering the jobs used by the Job function. Note, however, that the Job function is not supported on a computer that is running Windows NT. If you want to use the Job function, run the scanner with a computer running a supported operating system other than Windows NT. (See “Job Function,” on p. 20.)



- CapturePerfect and the Job Registration Tool use the TWAIN Driver. Be sure to install the ISIS/TWAIN Driver before you install CapturePerfect or the Job Registration Tool.
- The ISIS/TWAIN driver provided with the scanner does not necessarily operate all ISIS compatible applications or all TWAIN compatible applications. Contact your sales representative for further information.
- Some functions mentioned in this manual may not operate in some applications.

3.2

Installing the Software

This section describes how to install the ISIS/TWAIN driver, CapturePerfect, and Job Registration Tool that are used when operating the scanner. CapturePerfect and the Job Registration Tool use the TWAIN Driver. Install the software in the order of the ISIS/TWAIN Driver, CapturePerfect, and then the Job Registration Tool.



Important

- The Job function is not supported on a computer that is running Windows NT. If you want to use the Job function, run the scanner with a computer running a supported operating system other than Windows NT.
- If another ISIS compatible driver is already installed on the computer, be sure to make a backup of the following file. The content of this file may be overwritten when the ISIS/TWAIN driver is installed.
C:\Windows\PixTran*. *
C:\Windows\System\pix*.dll
- The names of the “\Windows” and “\Windows\System” folders are different, depending on which Windows operating system you are using. The names of the above folders are representative and should be replaced by the name of the folder used in your operating system.

1 Turn ON your computer and start Windows.



Important

Be sure to log on as an administrator if your system is Windows NT 4.0 Workstation, Windows 2000 Professional, or Windows XP.

2 Insert the setup disc into the CD-ROM drive.

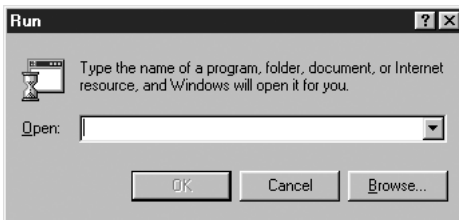
This manual assumes that “D” is assigned to your CD-ROM drive.

3 Click the [Start] button, and then select [Run].

The screen depends on which Windows operating system you are using.



4 Enter “D:*****\setup.exe” in the [Open] field, and then click [OK].



Note

- In this example, the CD-ROM drive name is D:.
- ***** stands for the name of the folder where you will install the applicable software.
 ISIS/TWAIN Driver: **D:\Driver\setup.exe**
 CapturePerfect: **D:\CapturePerfect\setup.exe**
 Job Registration Tool: **D:\JobTool\setup.exe**

5 This starts the installer. Follow the instructions that appear on your computer screen to complete the installation.

6 When the installation completes, restart your computer.

3.3

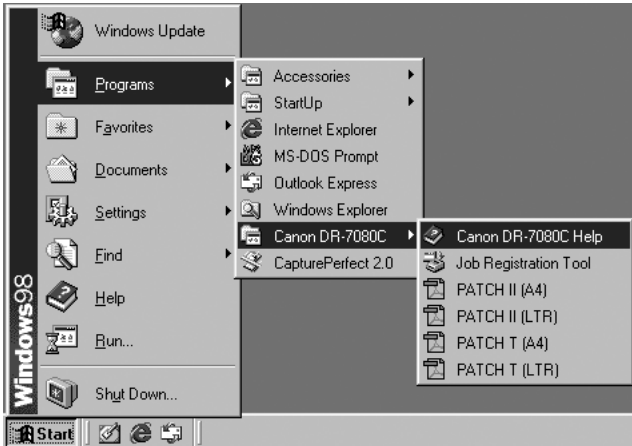
How to Use the Software

This section describes how to use CapturePerfect and Job Registration Tool for scanning. Read the “ISIS/TWAIN Driver HELP” for information on using the ISIS/TWAIN driver.

ENGLISH

How to Display the ISIS/TWAIN Driver Help File

The explanation on how to use the ISIS/TWAIN driver is in the ISIS/TWAIN driver help file. To view the help file, click the [Start] button, and then click [Programs] - [Canon DR-7080C] - [Canon DR-7080C Help].

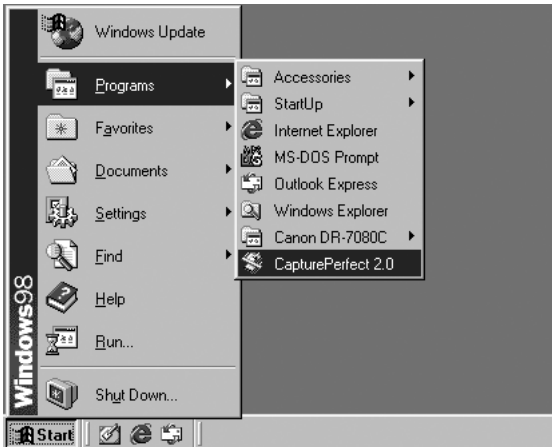


How to Start CapturePerfect

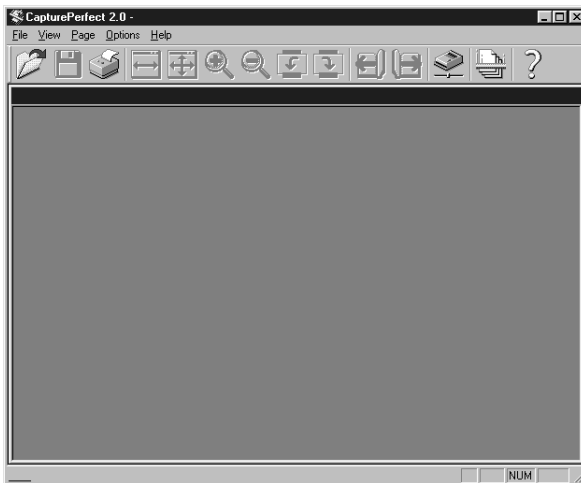
This section describes the procedure to start and exit CapturePerfect. See [Help] in CapturePerfect for information on how to use CapturePerfect.

1 Click the [Start] button, and then click [Programs] - [CapturePerfect 2.0].

Click [All Programs] - [CapturePerfect 2.0] if your OS is Windows XP.



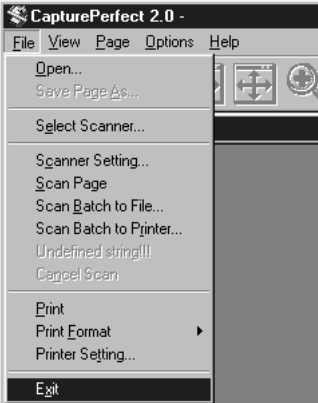
2 This starts CapturePerfect.



Note

The basic operation of CapturePerfect is noted in the CapturePerfect help file. To view the explanation, select [Help] from the [Help] menu on the menu bar in CapturePerfect.

3 Select [Exit] from the [File] menu.



ENGLISH

How to Start the Job Registration Tool

This section describes the procedure to start and end the Job Registration Tool. See [Help] in the Job Registration Tool for information on how to use the Job Registration Tool. Alternatively, for information on scanning procedures using the Job function, see "Using the Job Mode for Scanning," on p. 59.

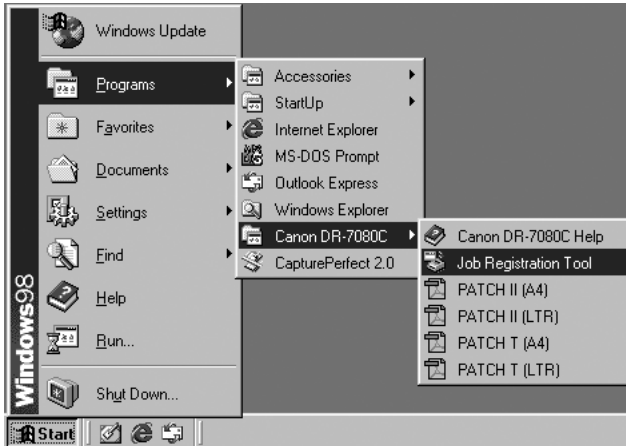


Important

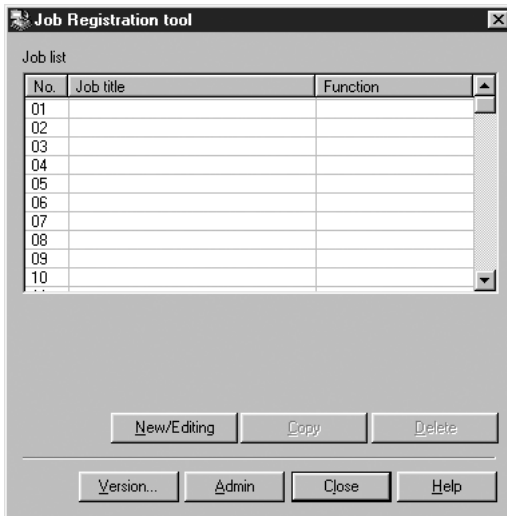
- If you are using Windows 2000 or Windows XP, be sure to log on as an Administrator.
- The Job function is not supported on a computer that is running Windows NT. If you want to use the Job function, run the scanner with a computer running a supported operating system other than Windows NT.

1 Click the [Start] button, and then click [Programs] - [Canon DR-7080C] - [Job Registration Tool].

In the case of Windows XP, click [All Programs] - [DR-7080C] -[Job Registration Tool].



2 This starts Job Registration Tool.



Note

- See the Job Registration Tool help file for information about how to use the Job Registration Tool. To view the help file, click the [Help] button.
- The last page of this manual is "Job Title Record." Use it to record the titles of jobs that you register with the Job Registration Tool.

3.4 Uninstalling the Software

This section explains how to uninstall the software.

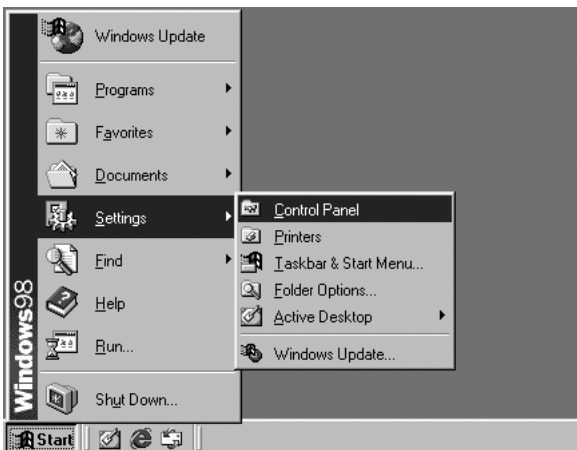


Important

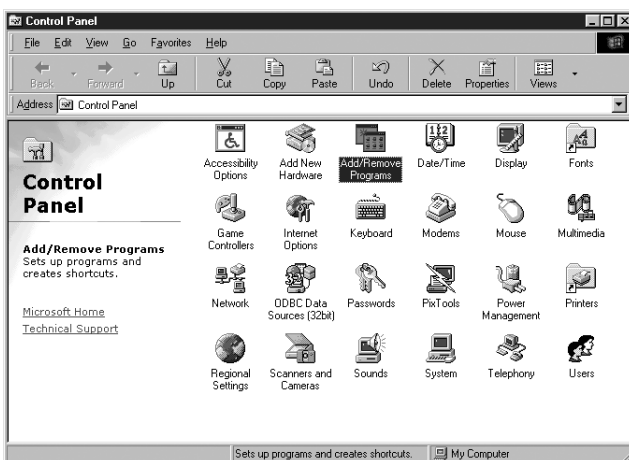
- Be sure to log on as an administrator if your system is Windows NT 4.0 Workstation, Windows 2000 Professional, or Windows XP.
- The dialogs and button names in Windows XP are different from those used in the explanations in this manual. Refer to the Windows XP “Help and Support Center” to uninstall the software.

ENGLISH

1 Click the [Start] button, and then click [Settings] - [Control Panel].

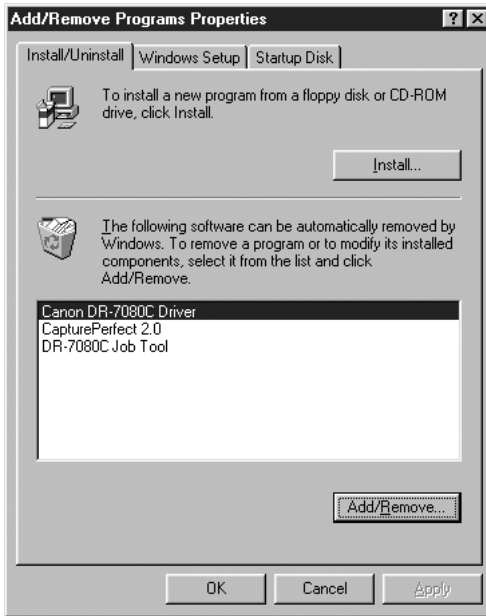


2 Double click on the [Add/Remove Programs] icon.

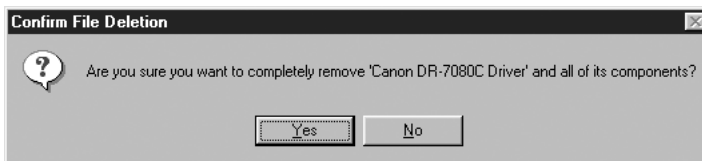


The [Add/Remove Programs Properties] dialog box appears.

- From the list in the dialog box, select the name of the application you want to remove, and then click the [Add/Remove] button.



- This displays a [Confirm File Deletion] dialog box for the application you are removing.



If you selected "Canon DR-7080C Driver," the above dialog box appears.

- Click the [Yes] button, and the uninstaller starts.
Follow the instructions on the screen to finish uninstalling the software.

Chapter 4

Using the Scanner

This chapter describes precautions regarding documents that can be handled on this scanner and scanning operations.

4.1 Documents	46
Types of Documents	46
Feeder Capacity	47
4.2 Placing Documents onto the Scanner	48
Loading a Document into the Feeder	48
Positioning a Document on the Flatbed (Platen Glass)	51
4.3 Document Feeding and Scanning	54
Scan Procedure	54
4.4 Other Scanning Techniques	59
Using the Job Mode for Scanning	59
Using the Count Only Mode	63
Using Patch Code Sheets	64

4.1

Documents

This section describes the various types of documents that can be scanned with the feeder.



Handle documents with care. Improper handling of paper can cause paper cuts or other personal injury.

Types of Documents

The following are the dimensions of the documents that can be fed by the feeder:

- Width: 139.7 mm to 304.8 mm
- Length: 128 mm to 432 mm (Normal Mode)
128 mm to 630 mm (Long Document Mode)
128 mm to 540 mm (Long Document Mode/Color 600 dpi Mode)

Document Thickness

Black-and-white Documents

- Simplex: 0.06 mm to 0.15 mm
- Duplex: 0.07 mm to 0.15 mm

Black-and-white/Color Documents Mixed

0.07 mm to 0.15 mm

Color Documents

0.08 mm to 0.15 mm

Document Weight

Black-and-white Documents

- Simplex: 42 to 128 g/m²
- Duplex: 50 to 128 g/m²

Black-and-white/Color Documents Mixed

50 to 128 g/m²

Color Documents

64 to 128 g/m²

Follow these guidelines when you prepare a document for scanning:

- When scanning long documents, turn the Long Document Mode "ON" in the user mode. (See "About the User Modes," on p. 70)
- Before scanning documents that contain pasted artwork, make sure that the ink or paste on the pages is thoroughly dry. If the documents are scanned with the ink or paste still wet, the scanner may malfunction.
- If you scan a document written in pencil, the letters may not scan properly or the pencil may rub off onto the rollers and stain subsequent documents. Before you scan this kind of document, make a copy and then scan the copy. After scanning a document written in pencil or some other soft writing material, be sure to clean the scanning rollers. (See "Cleaning the Feeder," on p. 94.)
- If you scan thin paper in the Duplex mode, the ink printed on the back side may be scanned. In this case, adjust the scanning density.

- If you scan documents with a rough surface, friction between the documents may cause a paper jam. In this case, select [Flatbed], and then scan the documents one page at a time.
- When you scan a batch of NCR documents, make sure that they are not stuck together. If a jam occurs, change the scanning side setting to "Flatbed," and then scan the document one page at a time.
- To avoid paper jams, damage to documents, and a scanner malfunction, do not feed the following types of paper. For such documents, scan one page at a time from the flatbed (platen glass).



Wrinkled or creased paper



Carbon-backed paper



Curled paper



Coated paper



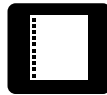
Torn paper



Extremely thin paper



Paper with clips or staples



Paper with binding holes

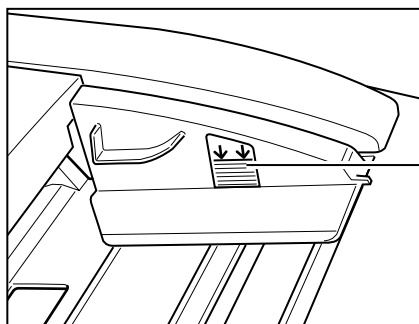
**Note**

- Note that mixing documents of different thicknesses and sizes may cause a malfunction during feeding.
- Documents containing text or pictures within 5 mm of its edges or documents with a color background may cause erroneous skew detection or automatic size detection.

Feeder Capacity

Note the following rules when loading a document into the feeder.

- Make sure the top of the document stack is not higher than the load limitation mark. Overloading the feeder can cause jamming.
- The feeder is designed to hold approximately 100 sheets of A4/LTR-size standard copy paper (80 g/m²).



Load Limitation Mark

4.2

Placing Documents onto the Scanner

This section describes how to load documents into the feeder and how to position a document page on the flatbed (platen glass) for scanning.

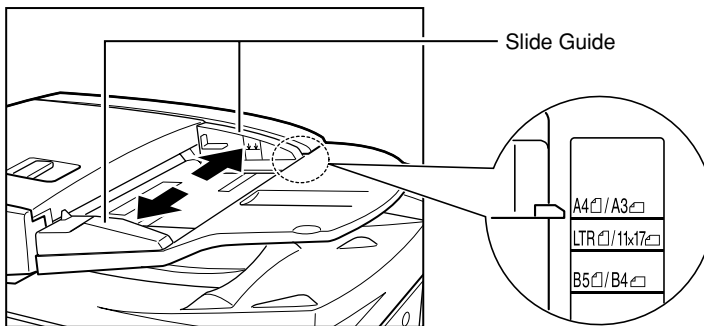


Handle documents with care. Improper handling of paper can cause paper cuts or other personal injury.

Loading a Document into the Feeder

Perform the following steps to load the pages of a document into the feeder for scanning.

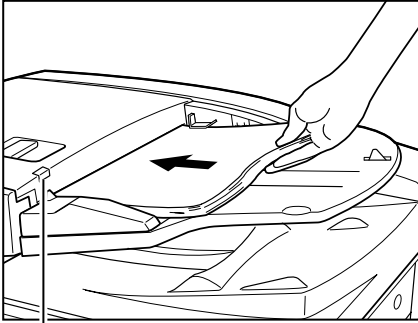
- 1 Adjust each slide guide so its pointer is aligned with the corresponding paper size on the document size label.**



Use both hands to adjust both the left and right slide guides. Adjusting only one slide guide can lead to a malfunction.

2 Align the edges of the document stack on a flat surface, and then load the stack into the feeder with the scanning side facing upwards.

Insert the stack into the feeder as far as it will go, until the document set indicator lights.

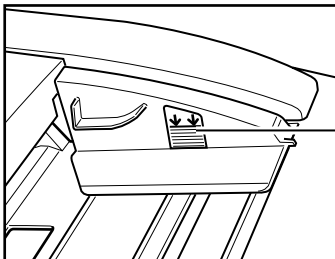


Document Set Indicator



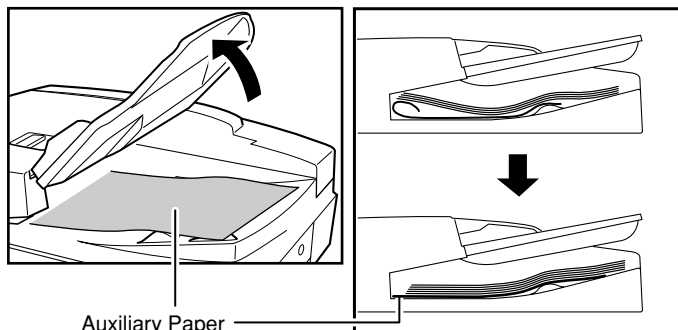
Important

- Make sure the top of the document stack is not higher than the load limitation mark. Overloading the feeder can cause jamming.
- The feeder is designed to hold approximately 100 sheets of A4/LTR-size standard copy paper (80g/m²).



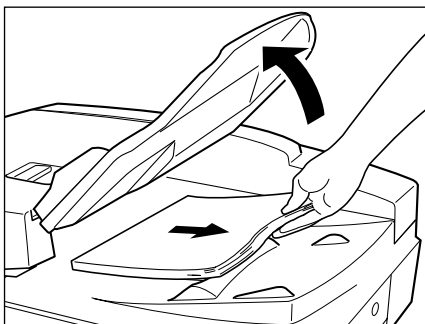
Load Limitation Mark

- When scanning NCR paper that is A3/11" x 17" or other large sizes, as well as paper that is very thin, the document may occasionally get caught in the paper eject mechanism. In this case, place some paper (auxiliary paper) in the document eject tray before scanning the document.



Auxiliary Paper

- 4** After scanning is complete, lift the document feeder tray, and then remove the document from the document eject tray.



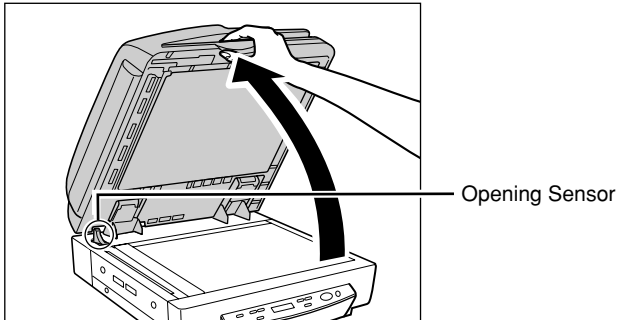
Important

- Leaving a document in the document eject tray and scanning another document can cause jamming.
- Raise the document feeder tray only as much as you need to remove the ejected document pages. Trying to forcibly raise the document feeder tray can cause a malfunction.

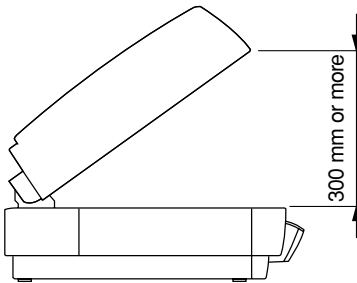
Positioning a Document on the Flatbed (Platen Glass)

Use the following procedure to scan on the flatbed (platen glass) when scanning a book, thick document, very thin document, an OHP (Overhead Transparency) transparency, or any other document that cannot be scanned using the feeder.

1 Raise the feeder.

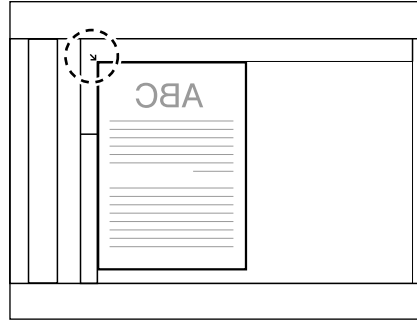
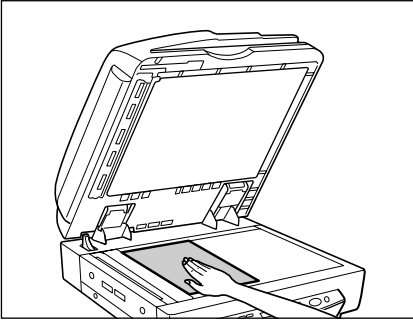


- Lower the feeder slowly, taking care to avoid pinching your fingers. Failure to do so might result in personal injury.
- When scanning on the flatbed (platen glass), raise the feeder at least 300 mm until the opening sensor unit is disengaged.

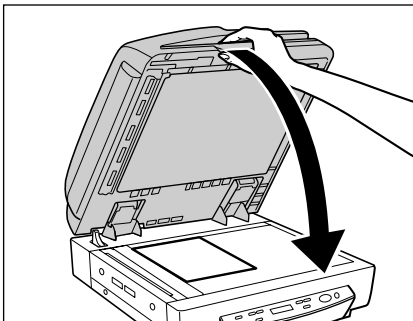


2 Place the document onto the flatbed (platen glass) with the scanning side facing downwards.

With the scanning side of the document facing downwards, align its corner with the arrow mark in the upper left corner of the flatbed (platen glass).



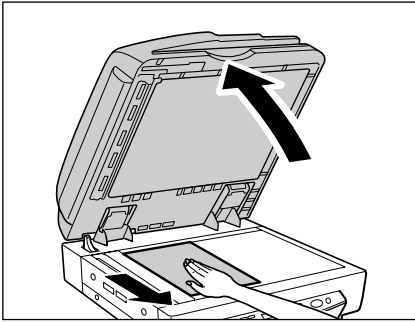
3 Slowly and carefully lower the feeder back down.



CAUTION

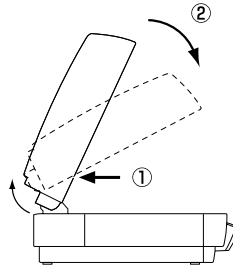
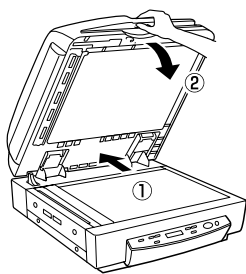
- Lower the feeder slowly, taking care to avoid pinching your fingers. Failure to do so might result in personal injury.
- When scanning a thick book or similar item on the flatbed (platen glass), avoid pressing down hard on the feeder. Doing so might damage the glass and create the risk of malfunction or personal injury.

4 Raise the feeder and remove the document from the flatbed (platen glass).

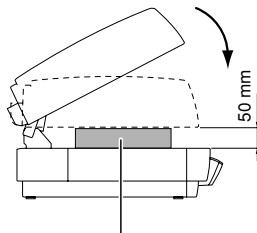


- Raise the feeder carefully and slowly, taking care to avoid letting the feeder fall over backwards.
- Leave the feeder raised when scanning thick documents like books, or operate the feeder as shown in the procedure below.

1. Raise the feeder.
2. While pressing on the bottom of the feeder ①, pull the feeder down and forward ②.

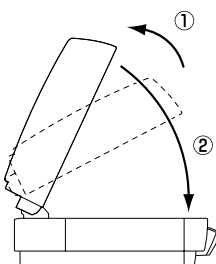


3. Set the thick document or book on the flatbed (platen glass) and hold the feeder lightly while scanning.



Book or Thick Document

4. To return the feeder to its original position, raise it all the way ①, then close it carefully and slowly. ②



4.3

Document Feeding and Scanning

This section describes the various different document feeding modes that are available, and the basic steps to use each mode for scanning.



- Avoid wearing loose fitting clothing, dangling jewelry, long ties, or even long hair that could become entangled with moving parts, especially the rollers that feed the paper. If such objects become entangled, immediately disconnect the power plug from the power outlet to stop the scanner.
- Check the stack and remove all clips, staples, pins, or any other type of metal or plastic fastener. They may damage the document, cause a paper jam, or scanner malfunction.

Scan Procedure

The ISIS/TWAIN driver “Feeding Option” setting allows you to select from among the three feeding modes described below. The procedure you should use depends on the currently selected feeding mode.

- **Standard Feeding (See p. 55.)**

With this mode, you start and stop scanning from an application on your computer. After placing the document onto the scanner, instruct the scanner from your computer to start scanning.

- **Panel Feeding (See p. 56.)**

Panel feeding comes in handy when using the feeder for continuous scanning, for scanning page-by-page from a book, etc. After placing the document page onto the scanner, press the scanner’s [Start] key to start scanning. When scanning is complete, place the next document page onto the scanner, and then press the [Start] key again.

- **Automatic Feeding (See p. 57.)**

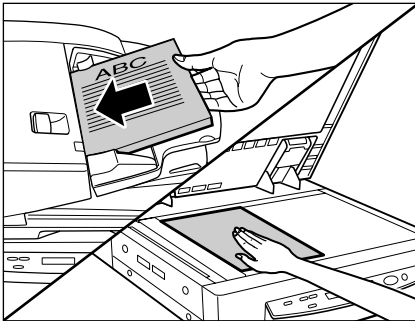
Use this mode for scanning a stack of document pages with the feeder. The scanner will start scanning automatically when it detects a document in the document feeder tray. Scanning stops when the document feeder tray is empty. Loading the next document into the document feeder tray restarts scanning.

◆ Standard Feeding

To use the standard feeding mode, instruct the scanner to start from the application.

1 Select [Standard Feeding] in [Feeding Option] on the ISIS/TWAIN driver's settings screen.

2 Place the document onto the scanner.



Important

See "Placing Documents onto the Scanner," on page 48 for information about placing documents onto the scanner.

3 From the application you are using, execute the required command to start scanning.

⇒ This starts scanning.

4 When scanning of the document is complete, the application goes into the Ready Mode.



Note

If paper feeding stops during scanning due to a system error or paper jam, make sure that the last page of the document was recorded properly before continuing to scan.

- 5 If you want to scan another document, place it onto the scanner, and then execute the required command from the application to resume scanning. To finish scanning, execute the required command from the application.**

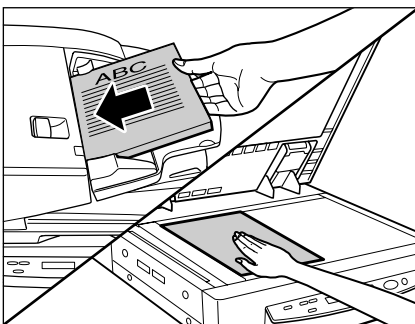


If you are using the feeder for scanning, be sure to remove ejected document pages from the document eject tray before scanning another document. Leaving a document in the document eject tray and scanning another document can cause a paper jam.

◆ Panel Feeding

With panel feeding, you execute the scan command from your application, and then use the scanner's [Start] and [Stop] keys to control the scanning operation.

- 1 Select [Panel-Feeding] in [Feeding Option] on the ISIS/TWAIN driver's settings screen.**
- 2 From the application you are using, execute the required command to start scanning.**
 - ➔ This causes the [Start] key lamp to light green.
- 3 Place the document onto the scanner.**



See "Placing Documents onto the Scanner," on page 48 for information about placing documents onto the scanner.

- 4 Press the [Start] key.**

5 When scanning of the document is complete, the scanner goes into the Ready Mode.



Note

If paper feeding stops during scanning due to a system error or paper jam, make sure that the last page of the document was recorded properly before continuing to scan.

6 If you want to scan another document, place it onto the scanner, and then press the [Start] key again to resume scanning. To finish scanning, press the [Stop] key.



Important

If you are using the feeder for scanning, be sure to remove ejected document pages from the document eject tray before scanning another document. Leaving a document in the document eject tray and scanning another document can cause a paper jam.

◆ Automatic Feeding

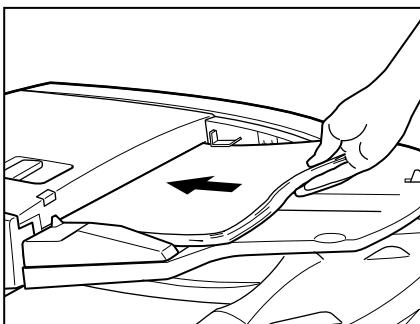
Automatic feeding can be used when feeding a document from the feeder. After you execute the scan start command from the application, the scanner starts scanning automatically whenever it detects a document loaded into the feeder.

1 Select [Automatic Feeding] in [Feeding Option] on the ISIS/TWAIN driver's settings screen.

2 From your application, execute the command to start scanning.

⇒ This causes the [Start] key lamp to light green.

3 Load the document into the document feeder tray.



➔ The scanner detects the documents, and scanning starts.



See “Placing Documents onto the Scanner,” on page 48 for information about placing documents onto the scanner.

4 When scanning of the document is complete, the scanner goes into the Ready Mode.

5 Raise the document feeder tray to remove the ejected document pages.



Be sure to remove ejected document pages from the document eject tray before scanning another document. Leaving a document in the document eject tray and scanning another document can cause a paper jam.

6 Loading another document into the document feeder tray causes scanning to start automatically. After you finish scanning, press the [Stop] key.

4.4 Other Scanning Techniques

This section describes how to scan using the Job Mode and how to use the Count Only Mode to count the number of document pages. It also includes information about how to use the patch code sheet to perform automatic batch separation.

Using the Job Mode for Scanning



Important

The Job function is not supported on a computer that is running Windows NT. If you want to use the Job function, run the scanner with a computer running a supported operating system other than Windows NT.

1 Set the Event function.

(See "Setting the Event Function," on p. 60.)

2 Use Job Registration Tool to register a job.

(See "How to Start the Job Registration Tool," on p. 41.)

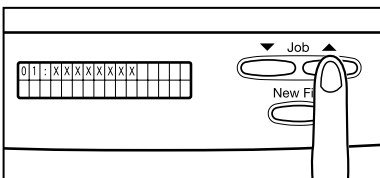


Note

See [Help] in the Job Registration Tool for information on how to register jobs with the Job Registration Tool.

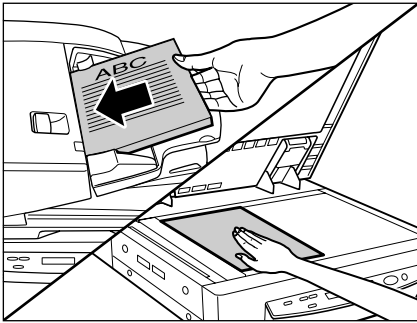
3 Press the Job [▲] key to enter the Job Mode.

➡ This causes the job number screen to appear on the display panel.



4 Use the Job [▲] and [▼] keys to select the number of the job (01 through 99) you want.

5 Place the document onto the scanner.



See “Placing Documents onto the Scanner,” on page 48 for information about placing documents onto the scanner.

6 Press the [Start] key.

➔ The image file is forwarded in accordance with the selected job.

7 When scanning of the document is complete, press the [Stop] key to exit the Job Mode.

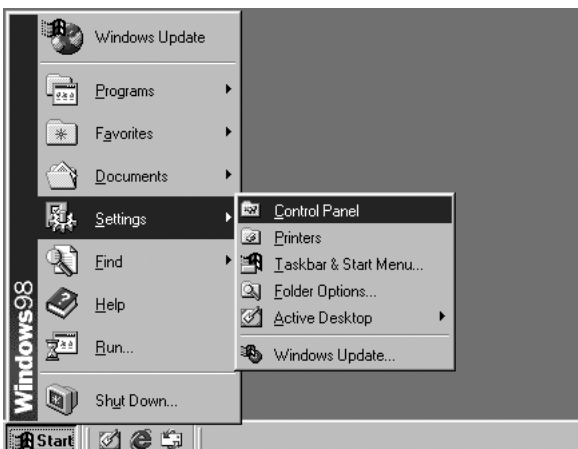


If you cannot get the Job Mode to operate correctly, see “Troubleshooting,” on page 86.

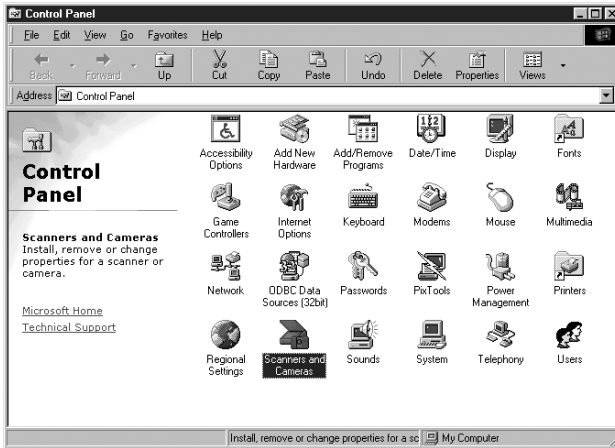
◆ Setting the Event Function

The Job function does not function when [DR7080C Job Tool] has not been specified in the scanner's Event function. Before using the Job function, set the scanner's event according to the following procedure.

1 Click the [Start] button, then click [Settings] - [Control Panel].



2 Double click [Scanners and Cameras].



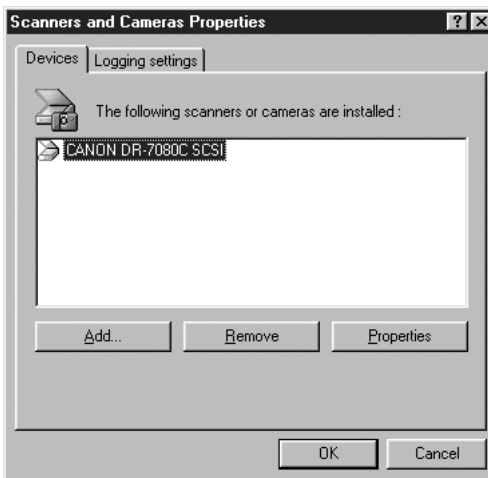
This displays the [Scanners and Cameras] dialog box.



Note

The dialog box that appears differs according to what version of Windows is running on the computer.

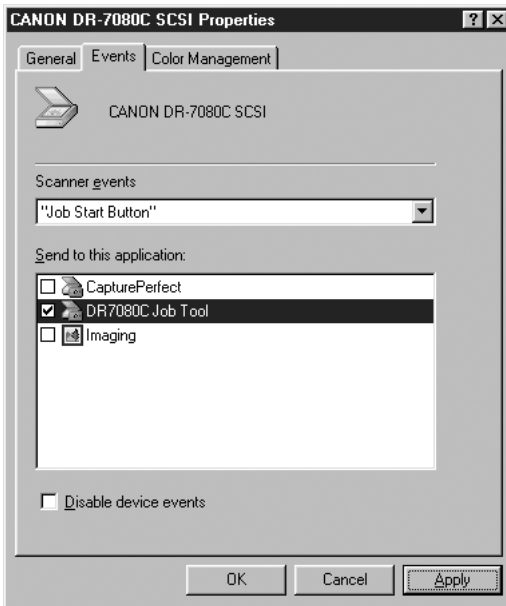
3 Select [Canon DR-7080C SCSI], and then click [Properties].



4 Click the [Events] tab.



5 Specify [Job Start Button] in the [Scanner events] field.



6 Uncheck all the items in the [Send to this application] field except for [DR7080C Job Tool].

7 Click the [Apply] button.



Important

You cannot use the Job function if the [Disable device events] check box is checked.

8 Click the [OK] button.

9 Restart Windows.

Using the Count Only Mode

In the Count Only Mode, document pages are sent through the feeder in order to count them. The document is not scanned. You can perform Count Only Mode operations on the scanner, without using your computer.

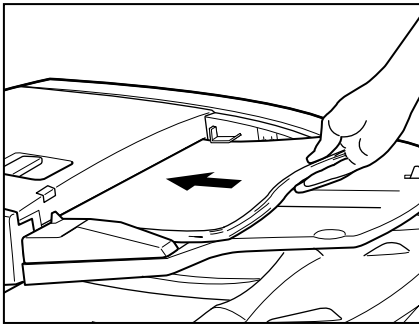
1 Use the user modes to enter the scanner's Count Only Mode.

(See “How to Set the User Modes,” on p. 72.)

C	o	u	n	t		O	n	l	y		M	o	d	e	
											0	0	0	0	0

⇒ This causes the Start key lamp to light green.

2 Load the document into the feeder, and then press the [Start] key.



⇒ This sends the pages of the document through the feeder and counts them.

3 After all of the document pages are fed, exit the Count Only Mode.

(See “How to Set the User Modes,” on p. 72.)

To clear the page count from the display panel, hold down the [Stop] key for approximately two seconds.

Using Patch Code Sheets

Patch code sheets are sheets of paper on which a special pattern is printed so that files can be separated without stopping the scanning operation. The scanner can recognize the pattern on these sheets, which allows files to be separated.

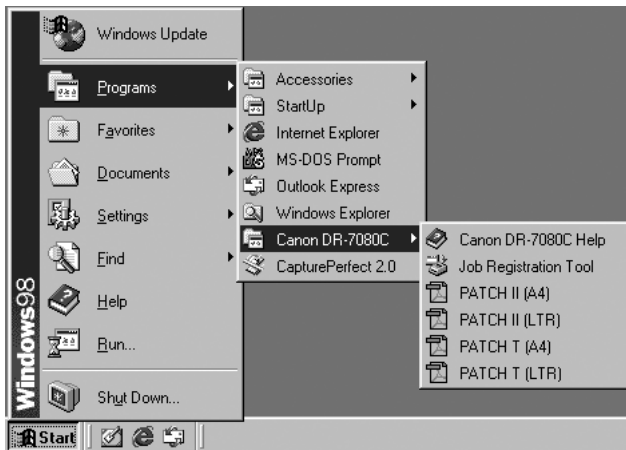


Note

- Refer to “ISIS/TWAIN Driver HELP” when using patch code sheets.
- Patch code sheets are enabled only when the application being used for scanning supports file separation.

◆ Patch Code Sheets

Patch code sheets are PDF (portable document format) data of which there are four types: [PATCH II (A4)], [PATCH II (LTR)], [PATCH T (A4)], and [PATCH T (LTR)]. Click the [Start] button in Windows, and then click [Programs] – [Canon DR-7080C] – [PATCH X(XX)], and use the document that is printed.



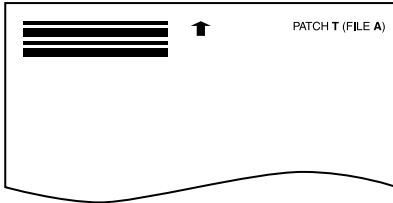
Note

You need CapturePerfect or an application that can open PDF (portable document format) files.

◆ Types of Patch Code Patterns

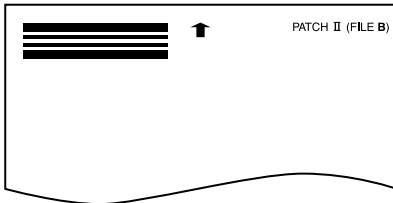
There are two patch code patterns as shown below. The result varies depending on the pattern.

● PATCH T (FILE A)



When this sheet is recognized, the document following the sheet is saved to a separate file.

● PATCH II (FILE B)



When this sheet is recognized, the file is separated after this sheet. This sheet is saved as an image, even if the patch code recognition setting is set not to save this sheet as an image.

◆ How to Use Patch Code Sheets

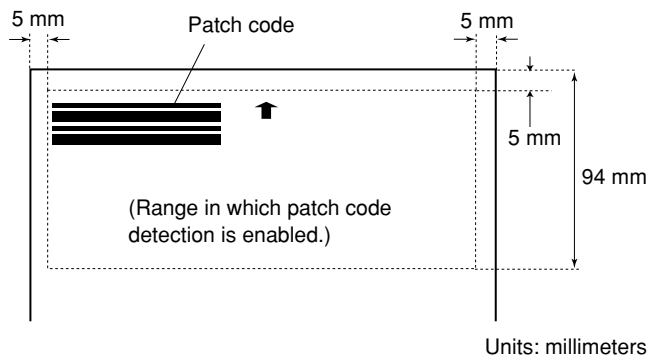
1 Print the patch code sheet on the following paper size:

- Print [PATCH II (A4)] and [PATCH T (A4)] on A4-size paper.
- Print [PATCH II (LTR)] and [PATCH T (LTR)] on letter size paper.



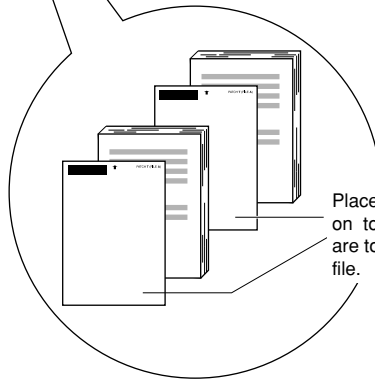
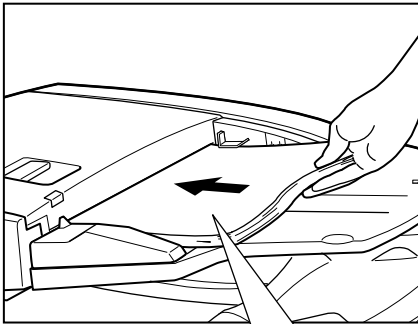
Note

- Patch code patterns are detected within the enabled range shown below. When you make a copy of the patch code sheet, adjust the position of the image so that it appears in the range in which detection is enabled.



- When copying the patch code sheets, use the same size paper and the same density as the original patch code sheet. If the copied sheet is not dense enough, or if it is too dense, the scanner may not be able to recognize it correctly.
- Be careful not to let the patch code sheet get dirty, particularly for the range in which patch code detection is enabled. Do not bend or wrinkle the patch code sheet. This could prevent the scanner from recognizing the sheet.
- When the patch code sheet is being scanned, if it is not dense enough, or if it is too dense, the scanner may not be able to recognize it correctly.

- 2 Place the patch code sheet on top of the documents that are to be saved to a separate file, and then scan the documents.**



Place the patch code sheet on top of the documents that are to be saved to a separate file.

- 3 Set the scanning conditions, and then start scanning.**

Chapter 5

User Modes

This chapter describes the user modes, which you can use to configure the scanner settings.

5.1 About the User Modes	70
User Mode Functions	70
How to Set the User Modes	72

5.1

About the User Modes

You can configure the scanner settings with the user modes described below.

User Mode Functions

User mode functions are as follows:

● Count Only Mode

C	o	u	n	t		O	n	l	y		M	o	d	e	
						O	N				[O	F	F]

ON: Count Only Mode (See “Using the Count Only Mode,” on p. 63.)

OFF: Normal Mode (default)

● Long Document Mode

L	o	n	g		D	o	c	u	m	e	n	t			
						O	N				[O	F	F]

ON: Enables detection of documents up to 630 mm long for auto document size detection. (See “Documents,” on p. 46.)

OFF: Enables detection of documents up to 432 mm long for auto document size detection (default).



Note

- If you scan using Long Document Mode, the scanning speed may slow down.
- If a document page is not aligned correctly when using the Long Document Mode, it might come into contact with the two sides of the feeder, which can damage the page. Take care to make sure that document pages are aligned correctly.

● Stand-by Mode

S	t	a	n	d	-	b	y		M	o	d	e			
						[O	N]			O	F	F	

ON: Scanner enters Stand-by Mode after 10 minutes of non-use (default).

OFF: Scanner does not enter Stand-by Mode.

● Display Language Mode

J	a	p	a	n	e	s	e		(ニ	ホ	ン	コ	ス)
						O	N				[O	F	F]

ON: Japanese

OFF: English (default)

● Display Contrast Mode

D	i	s	p	a	y	C	o	n	t	r	a	s	t
			<	-	-	-	■	-	-	-	>		

Use the Set [**◀**] and [**▶**] keys to move the pointer (■) to the left for lighter contrast or to the right for darker contrast.

● Setting SCSI Transfer Speed

S	C	S	I	S	p	e	e	d					
			5			1	0		[2	0]	

Set the maximum value for synchronous transfer speed for the SCSI interface.

[5]: 5 Mbyte/sec

[10]: 10 Mbyte/sec (First SCSI)

[20]: 20 Mbyte/sec (Ultra SCSI) (default)

If the scanner does not operate correctly when the output speed is set to [20 Mbyte/sec], reduce the transfer speed to [10 Mbyte/sec] or [5 Mbyte/sec].



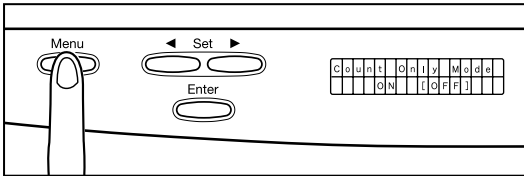
Important

If you change the setting for the SCSI transfer speed, turn OFF the scanner, and then turn it ON.

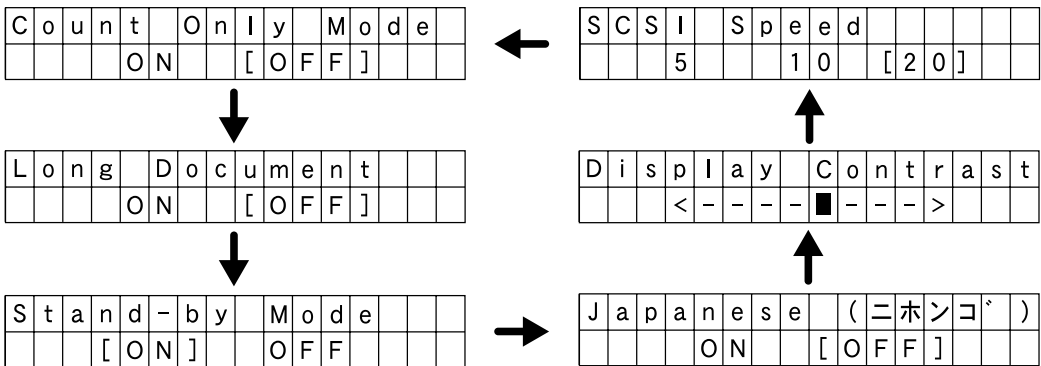
How to Set the User Modes

Use the following procedure to configure user mode settings.

1 Press the [Menu] key to display the user mode screens.



➡ Use the [Menu] key to cycle through the user modes in the sequence shown below.



2 Use the Set [◀] and [▶] keys to change the currently displayed setting.

3 Press the [Enter] key to register the displayed setting.

4 To exit the user mode screens, press the [Stop] key.

Chapter 6

Troubleshooting

This chapter describes the trouble that may occur on the DR-7080C and how to correct it.

6.1 When the Scanner Is Not Recognized	74
SCSI Connections	74
USB Connections	76
6.2 Clearing Paper Jams	77
Clearing a Paper Jam	77
Paper Jam Causes	81
6.3 When the Scanned Image Is Not Normal	82
6.4 Display Messages	83
Error Messages	83
Scanner Status Messages	85
6.5 Troubleshooting	86



When the Scanner Is Not Recognized

The following describes possible causes of your computer not recognizing the scanner. Remedy the problem by following the procedure for the respective cause.

SCSI Connections

Cause **The scanner is not correctly connected.**

Remedy Connect the SCSI cables to the scanner in the correct way.

Cause **The SCSI card is not correctly recognized.**

Remedy Correctly connect the SCSI card referring to the SCSI card manual. Also, check the following according to the OS that your computer is running on.

<Windows 98 and Windows Me>

Click [Start]-[Settings]-[Control Panel]-[System], and then open [Device Manager] and check if “SCSI Controller” has an “x” or “!” on it. If you can see one of these, then refer to the SCSI card’s operator’s manual to reset the SCSI card.

<Windows NT 4.0 Workstation>

Click [Start]-[Settings]-[Control Panel], and then open [SCSI adapter] and check if the “SCSI card” is being recognized correctly. If it is not correctly recognized, then refer to the SCSI card’s operator’s manual to reset the SCSI card.

<Windows 2000 Professional>

Click [Start]-[Settings]-[Control Panel]-[System]-[Hardware], and then open [Device Manager] and check if “SCSI controller” has an “x” or “!” on it. If you can see one of these, then refer to the SCSI card’s operator’s manual to reset the SCSI card.

<Windows XP>

Click [Start]-[Control Panel]-[Performance and Maintenance]-[System]-[Hardware], and then open [Device Manager] and check if “SCSI controller” has an “x” or “!” on it. If you can see one of these, then refer to the SCSI card’s operator’s manual to reset the SCSI card.

Cause	Same SCSI ID is used for other SCSI devices.
Remedy	Check the SCSI ID of all connected SCSI devices, and make sure that the same SCSI ID is not set to two or more devices. Reset the SCSI IDs if the same SCSI ID is set. (See p. 27.)
Cause	The terminator is not correctly connected.
Remedy	Connect the terminator to the last SCSI device on the end of the daisy chain. Enable the terminator function if the SCSI device has a built-in terminator function. (See p. 27.)
Cause	The scanner was turned ON after the computer.
Remedy	Turn OFF the computer and scanner. Then, turn ON the scanner, and then turn ON the computer. (See p. 31.)
Cause	The scanner is OFF.
Remedy	Turn OFF the computer. Then, turn ON the scanner, and then turn ON the computer. (See p. 31.)
Cause	The scanner's power cord is disconnected from the scanner or the AC power outlet.
Remedy	Turn OFF the computer, and correctly connect the scanner's power cord. Then, turn ON the scanner, and then turn ON the computer. (See p. 30.)
Cause	The scanner does not support the SCSI card.
Remedy	Replace with a SCSI card compatible with the driver application. (See p. 25.)

USB Connections

Cause **Scanner is not correctly connected.**

Remedy Connect the scanner correctly with a cable that supports USB 2.0.
(See p. 29.)

Cause **The USB 2.0 interface card is not correctly installed on the computer.**

Remedy Refer to the USB 2.0 interface card operation manual and install it correctly. Also, check if the USB 2.0 interface card is being recognized by Windows in the operating system you are using.

Cause **The scanner is OFF.**

Remedy Check the connections with the computer, and then turn ON the scanner. (See p. 31.)

Cause **The USB 2.0 interface card does not support the scanner.**

Remedy Use one of the recommended USB 2.0 interface cards. (See p. 29.)

6.2 Clearing Paper Jams

A paper jam is indicated when scanning stops unexpectedly and the message shown below appears on the display panel. Use the procedure below to clear a paper jam.

F	e	e	d	i	n	g	M	i	s	s				

Clearing a Paper Jam



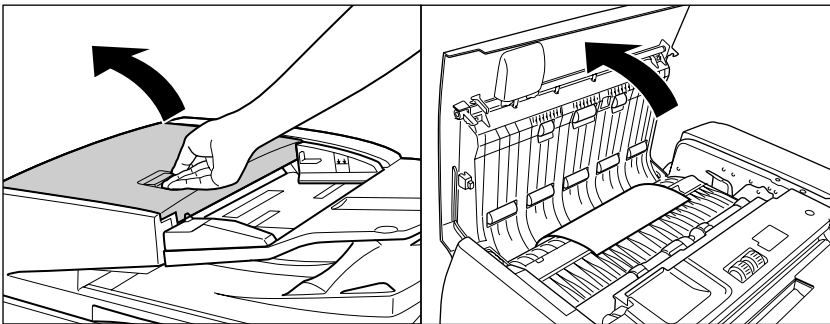
CAUTION

- Be careful when you clear a paper jam. You may be injured unexpectedly. For example, the paper edges may cut your fingers, or the document may be damaged.
- Remove all jammed sheets of paper. Paper scraps left inside the scanner may be drawn into the scanner again, causing another paper jam or malfunction.
- When opening or closing the feeder, take care not to get your fingers caught.

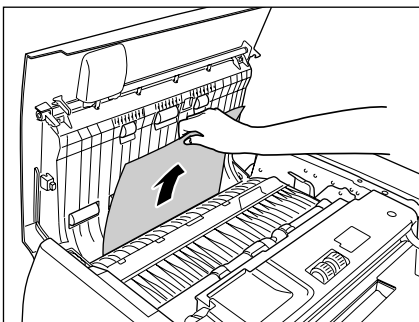
1 Remove all document pages from the document feeder tray and the document eject tray.

2 Open the feeder cover.

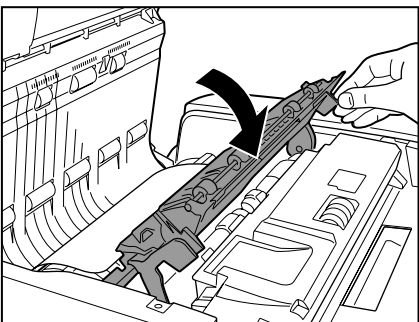
Operate the opening lever, and then slowly raise the cover until it stops.



3 Remove the jammed paper.



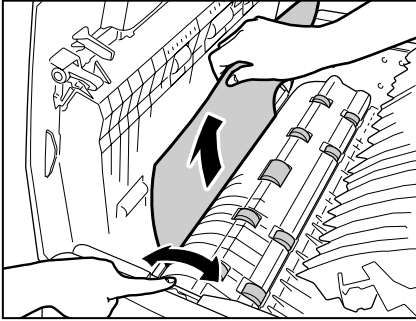
4 If the document is jammed under the feeder guide, grasp the tab inside the scanner to open the feeder guide.



Note

If you are duplex scanning, the document may be jammed under the feeder guide.

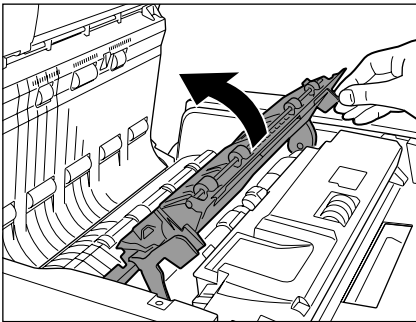
5 Rotate the dial on your side of the scanner to remove any paper jammed inside the feeder.



Note

- Rotating the dial to the right reverse feeds any paper jammed inside the feeder. Gently pull the paper from the feeder as you rotate the dial.
- Rotating the dial to the left forward feeds jammed paper into the document eject tray. After feeding the paper, raise the document feeder tray and remove the paper.

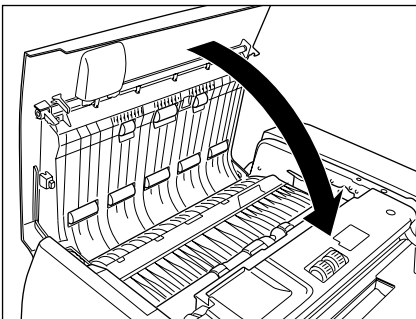
6 Close the feeder guide.



CAUTION

Take care to avoid pinching your fingers when closing the feeder guide.

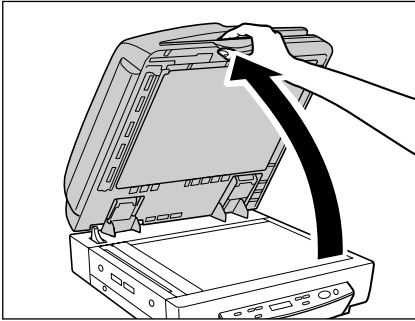
7 Close the feeder cover.



CAUTION

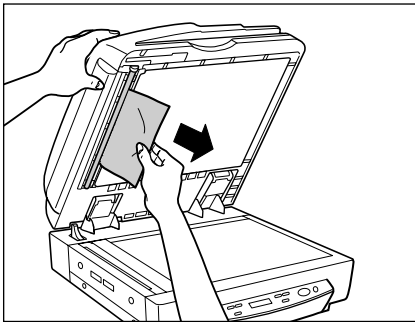
Take care to avoid pinching your fingers when closing the feeder cover.

8 Raise the feeder.

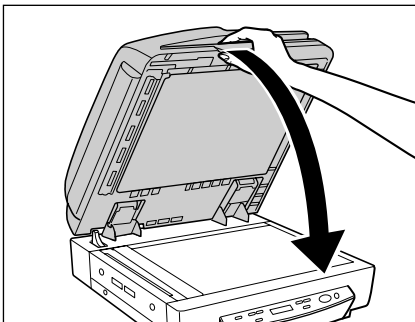


Open the feeder carefully and slowly, taking care to avoid letting the feeder fall over backwards.

9 Remove any paper jammed inside the feeder.



10 Slowly and carefully lower the feeder back down.



Lower the feeder slowly, taking care to avoid pinching your fingers. Failure to do so might result in personal injury.

Paper Jam Causes

Any of the following factors can cause paper to jam. If you experience paper jams, check the following points and take the required action:

- **What to check:** Is the document size or thickness outside the range supported by the feeder, or is the document paper of substandard quality?
What to do: See “Documents,” on p. 46 for information about required document properties.
- **What to check:** Is a jam being caused by document paper that is not sliding properly?
What to do: Scan such paper from the flatbed (platen glass), one page at a time. (See p. 51.)
- **What to check:** Are the rollers inside the feeder dirty or worn?
What to do: If the rollers are dirty, clean them. (See p. 93.) If the rollers are worn, contact your service representative to have them replaced.

6.3

When the Scanned Image Is Not Normal

If there is a problem on the scanned image (image is not sharp or stripes appear on the image), one of the following may be a probable cause. Check the following points and take the appropriate action.

- **The scanning glass or rollers in the scanner are dirty.**

If the scanning glass or rollers in the scanner are dirty, that dirt will appear on the scanned image.

→ Clean the scanning glass and rollers. For details, see “Daily Cleaning,” on p. 92.

- **The scan conditions are inappropriate.**

When the scan condition setup is inappropriate, the scanned image will not be sharp or will appear darkish.

→ Check the brightness and other scanner settings.

If the scanned image is foggy or the document is not scanned at all, a probable cause is that the brightness is set too high.

If the scanned image appears darkish, a probable cause is that the brightness is set too low.

Also, check the settings on the driver and the application.

- **The driver or application does not run correctly.**

If the document cannot be scanned correctly even if the scan conditions are adjusted, a probable cause is that the driver or the application is not functioning correctly.

→ Uninstall and then reinstall the driver or application.

For details on how to install the driver, see “Installing the Software,” on p. 37.

For details on how to install the application, see the instruction manual for the application in use.

- **Other Causes**

Even if the computer is correctly recognizing the scanner, and the driver and the application are installed correctly, scanning may not be performed correctly. A probable cause is that the interface card is not compatible. Use the recommended interface card.

If the above remedies do not rectify the problem, contact your service representative.

6.4 Display Messages

This section explains the error messages and scanner status messages that appear on the display panel.

Error Messages

The following are the messages that appear to indicate errors.

Display C o v e r O p e n 0 1

Cause **The feeder cover is open.**

Remedy Close the feeder cover.

Display C o v e r O p e n 0 2

Cause **The feeder is raised.**

Remedy Lower the feeder back down.

Display F e e d i n g M i s s

Cause **Jam**

Remedy Check the document and try again. If this error continues to appear, scan the document from the flatbed (platen glass).

Display J a m x x x x

Cause **Paper is jammed in the feeder.**

Remedy Use the procedure under “Clearing a Paper Jam,” on p. 77 to clear the jammed paper.

Display S e n d f a i l e d .

Cause **Scan to Mail send error occurs when sending images using the Job Registration Tool.**

Remedy Check the configuration of the Job Registration Tool settings and try again.

Display

D	e	t	e	c	t		M	i	x		D	o	c	.		

Cause

You are attempting to scan a document that contains mixed page sizes while the Different Size Originals Mode is off.

Remedy

Confirm the front/rear sides of the ejected document, then turn on the Different Size Originals Mode and scan the document again.

Display

E	r	r	o	r			E	x	x	x	x	x	x	x		

Cause

This is a “service call error,” which indicates that the scanner has an internal problem.

Remedy

This error requires servicing from your service representative. Turn off the scanner. With the displayed error code on hand, contact your sales representative or your service representative.

Scanner Status Messages

The following messages indicate the current status of the scanner:

Display

P	I	e	a	s	e	w	a	i	t	.	.	.		

Status

The scanner is performing some process. Please wait.

Display

R	e	a	d	y										
										0	0	0	0	0

Status

The scanner is in the Ready Mode. The scanner will go into the Stand-by Mode if you do not perform any operation for approximately 10 minutes.

Display

S	t	a	n	d	-	b	y	M	o	d	e			

Status

The scanner is in the Stand-by Mode. A signal from the computer or an operation panel key operation will recover the scanner to Ready Mode.

Display

C	o	u	n	t	O	n	l	y	M	o	d	e		
										0	0	0	0	0

Status

The scanner is in the Count Only Mode. (See "Using the Count Only Mode," on p. 63.)

Display

0	1	=	X	X	X	X	X	X	X	X	X			

Status

The scanner is in the Job Mode. Press the [Start] key to start scanning or the [Stop] key to exit the Job Mode. (See "Using the Job Mode for Scanning," on p. 59.)

6.5 Troubleshooting

Check the following points when you have problems with the scanner operation:

- **Display panel messages are in a different language.**
Cause: The user mode language setting is not configured correctly.
Remedy: Display the user mode language setting and select the correct language. (See "About the User Modes," on p. 70.)

- **Display panel is too dark or too bright.**
Cause: The display panel brightness is not adjusted correctly.
Remedy: Adjust the display panel brightness in the user modes. (See "About the User Modes," on p. 70.)

- **Cannot scan with the feeder.**
Cause: The ISIS/TWAIN driver "Scanning Side" setting is "Flatbed."
Remedy: Change the "Scanning Side" setting to something other than "Flatbed."

- **Job titles do not appear when the [Job] keys are pressed.**
Cause 1: There are no jobs registered with the Job Registration Tool.
Remedy 1: Use the Job Registration Tool to register a job. (See "How to Start the Job Registration Tool," on p. 41.)

Cause 2: The computer is turned OFF or it is not connected to the scanner.
Remedy 2: Job data is stored on the computer. Make sure the computer is connected properly and turned ON. (See "Connecting to a Computer," on p. 25.)

- **The Job function does not work when the [Start] key is pressed after selecting a job.**
Cause 1: The computer is running an operating system that does not support the Job function.
Remedy 1: The Job function is not supported under Windows 95 or NT. Use a computer running another operating system when you want to use the Job function. (See "Checking Your Operating Environment," on p. 24.)

Cause 2: The Windows Event function is not configured to start DR-7080C Job Tool.
Remedy 2: On the Windows Control Panel, double-click [Scanners and Cameras] to open DR-7080C SCSI properties. Specify "DR-7080C Job Tool" as the "Event" startup application. (See "Setting the Event Function," on p. 60.)

- **The Job function does not work when the [Start] key is pressed after selecting a job, and [Scan Error] is displayed.**
 - Cause 1: Another application is using the DR-7080C ISIS/TWAIN Driver.**
Remedy 1: Close the other application that is using the DR-7080C ISIS/TWAIN Driver.
 - Cause 2: Feeding is specified from the feeder, and a document is not loaded in the feeder.**
Remedy 2: Reload a document into the feeder.

- **Cannot scan with USB cable connections.**
 - Cause: The SCSI terminator has not been turned ON.**
Remedy: For this scanner to operate normally, the SCSI terminator needs to be turned ON even when using USB connections. Be sure to turn ON the SCSI terminator. (See "Checking Your Operating Environment," on p. 24.)

- **The feeder does not close completely.**
 - Cause: The feeder is in the book scanning position.**
Remedy: Raise the feeder all the way, and then close it carefully and slowly. (See "Positioning a Document on the flatbed (platen glass)," on p. 51.)

Chapter 7

User Maintenance

This chapter describes daily cleaning of the scanner.

7.1 Changing the Stamp Cartridge	90
7.2 Daily Cleaning	92
Cleaning the Main Unit	92
Cleaning the Flatbed (Platen Glass) and Pressure Board (Black)	93
Cleaning the Feeder	94
Cleaning the Power Plug	98

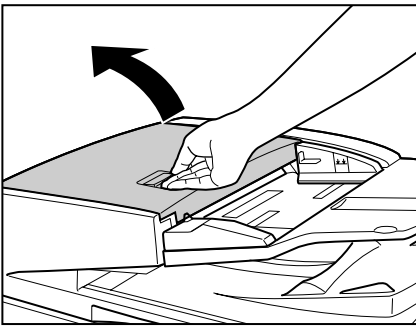
7.1

Changing the Stamp Cartridge

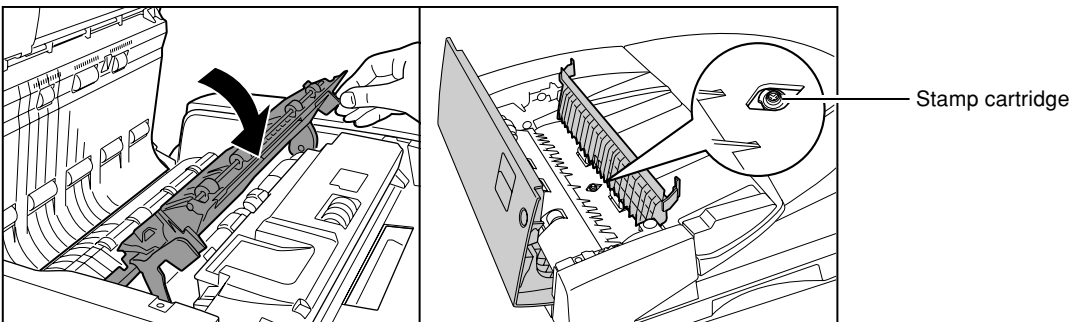
When using the optional stamp unit (see p. 21) to stamp scanned documents, you should use the following procedure to replace the stamp cartridge whenever the stamp mark becomes smudged or faint. Contact your sales representative or service representative to purchase a new stamp cartridge.

1 Open the feeder cover.

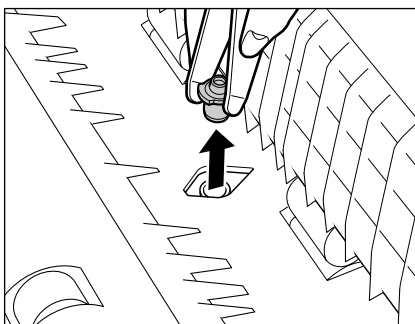
Operate the opening lever, and then slowly raise the cover until it stops.



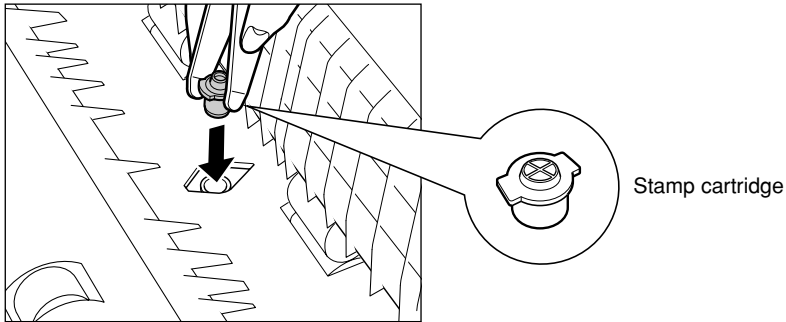
2 Grasping the tab inside the scanner, open the feeder guide.



3 Use a pair of tweezers or some similar tool to remove the old stamp cartridge.



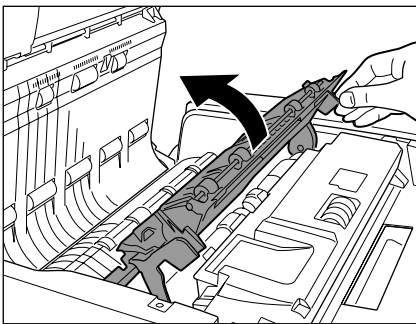
4 Insert a new stamp cartridge.



Important

- When installing the stamp cartridge, make sure that the stamp does not protrude outside the hole.
- Improperly installing the stamp cartridge can cause paper jams.

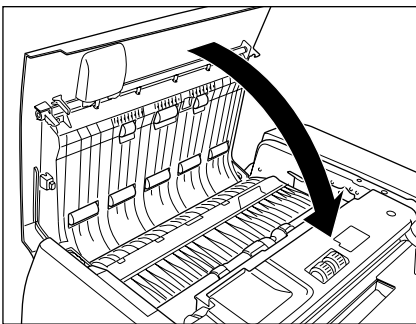
5 Close the feeder guide.



CAUTION

Take care to avoid pinching your fingers when closing the feeder guide.

6 Close the feeder cover.



CAUTION

Take care to avoid pinching your fingers when closing the feeder cover.

7.2 Daily Cleaning

To maintain high-quality scanning, you should periodically clean the following:

- Main unit
- Flatbed (Platen glass)
- Pressure Board (Black)
- Feeder

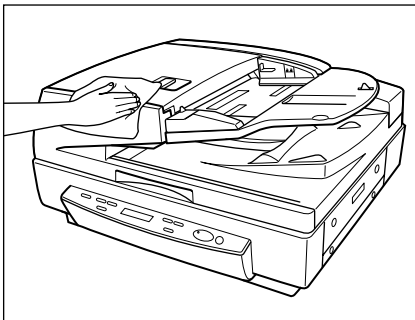


CAUTION

- Before you clean the scanner, turn OFF the scanner and computer and disconnect the power cord from the power outlet. Otherwise, an electrical shock may result.
- Never clean the scanner with any kind of organic solvent, such as alcohol, benzene, or paint thinner. It might cause a fire and electrical shock, or cause the exterior of the scanner to disfigure or discolor.
- Never spray detergent or water directly onto the flatbed (platen glass). Sprayed liquid can get inside the scanner and soil the light source and lens.
- Overuse of water and allowing the scanner to become too wet during cleaning can damage scanned documents and cause malfunction of the scanner.

Cleaning the Main Unit

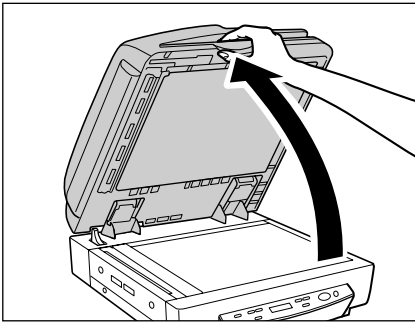
Wipe the scanner with a firmly wrung cloth moistened slightly with water or mild detergent. Then wipe off with a clean, dry cloth.



Cleaning the Flatbed (Platen Glass) and Pressure Board (Black)

A dirty flatbed (platen glass) or pressure board (black) can cause soiling of scanned images, or document size detection errors. Clean the flatbed (platen glass) and pressure board (black) periodically.

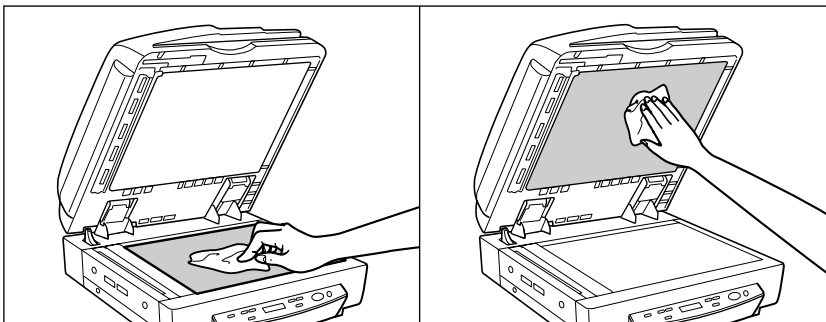
1 Raise the feeder.



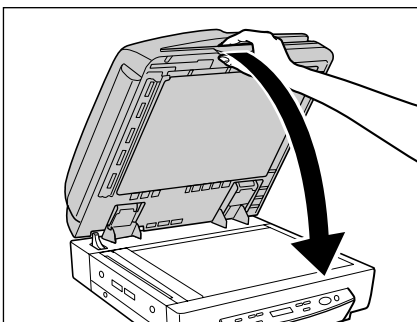
CAUTION

Open the feeder carefully and slowly, taking care to avoid letting the feeder fall over backwards.

2 Wipe the flatbed (platen glass) and pressure board (black) with a cloth moistened with plain water and thoroughly wrung out. Next, wipe the flatbed (platen glass) and pressure board (black) with a soft, dry cloth.



3 Slowly and carefully lower the feeder back down.



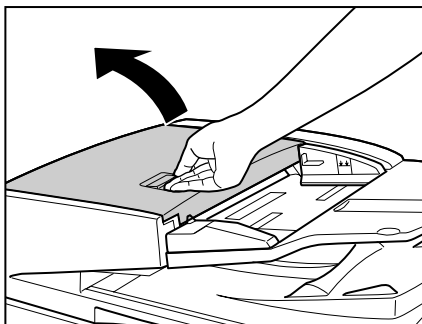
Lower the feeder slowly, taking care to avoid pinching your fingers. Failure to do so might result in personal injury.

Cleaning the Feeder

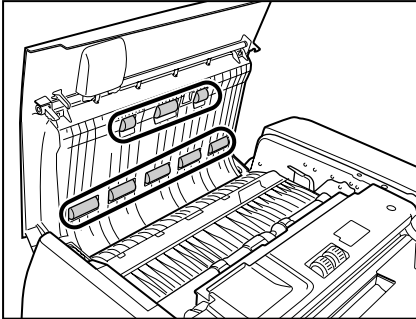
Without periodical cleaning, a problem may be caused on the scanned image or the document may become soiled. Clean the feeder periodically.

1 Open the feeder cover.

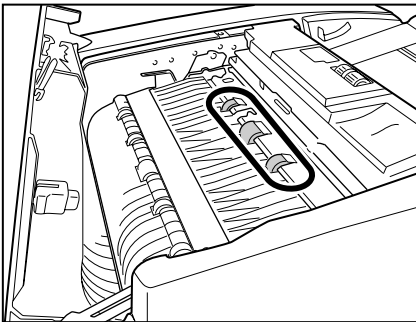
Operate the opening lever, and then slowly raise the cover until it stops.



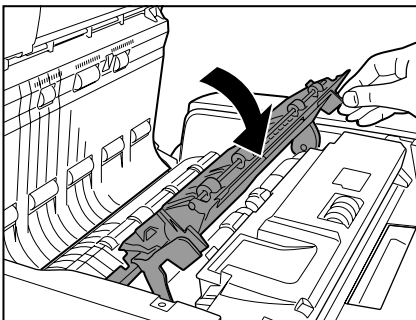
- 2** Wipe the eight rollers inside the feeder cover with a cloth moistened with plain water and thoroughly wrung out. Next, wipe the rollers dry with a soft, dry cloth.



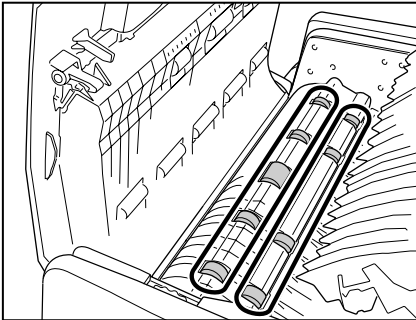
- 3** Wipe the three rollers on the feeder guide with a cloth moistened with plain water and thoroughly wrung out. Next, wipe the rollers dry with a soft, dry cloth.



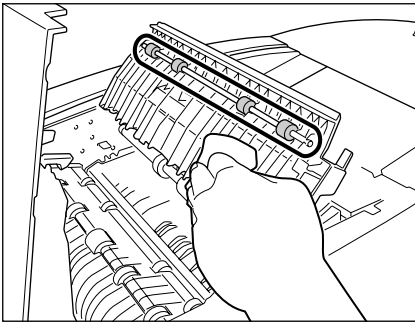
- 4** Grasping the tab inside the scanner, open the feeder guide.



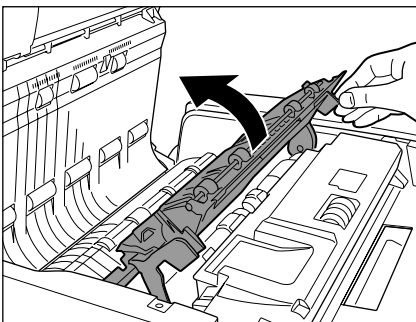
- 5** Wipe the nine rollers with a cloth moistened with plain water and thoroughly wrung out. Next, wipe the rollers dry with a soft, dry cloth.



- 6** Wipe the four rollers inside the feeder guide with a cloth moistened with plain water and thoroughly wrung out. Next, wipe the rollers dry with a soft, dry cloth.

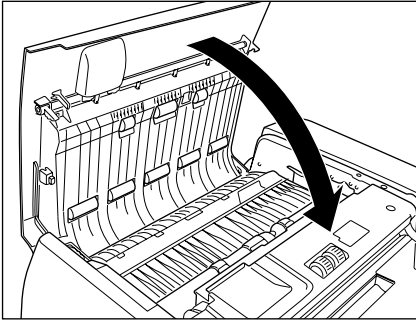


- 7** Close the feeder guide.



Take care to avoid pinching your fingers when closing the feeder guide.

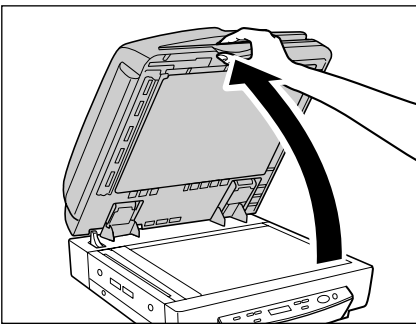
8 Close the feeder cover.



CAUTION

Take care to avoid pinching your fingers when closing the feeder cover.

9 Raise the feeder.



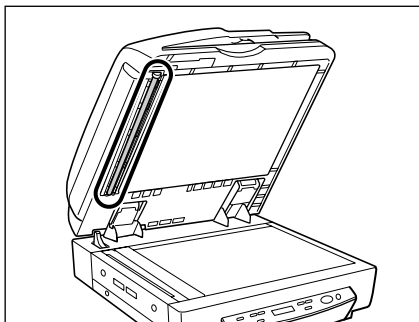
CAUTION

Open the feeder carefully and slowly, taking care to avoid letting the feeder fall over backwards.

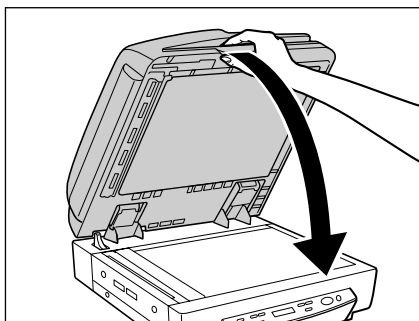
10 Wipe the scanning glass (narrow strip of glass) to the left of the flatbed (platen glass) with a cloth moistened with plain water and thoroughly wrung out. Next, wipe the glass dry with a soft, dry cloth.



- 11** Wipe the metal next to the rubber rollers with a cloth moistened with plain water and thoroughly wrung out. Next, wipe the metal dry with a soft, dry cloth.



- 12** Slowly and carefully lower the feeder back down.



CAUTION

Lower the feeder slowly, taking care to avoid pinching your fingers. Failure to do so might result in personal injury.

Cleaning the Power Plug

If you leave the power plug connected to the power outlet for a long period of time, dust may accumulate at the power outlet, and cause a fire or electrical shock. Clean the power plug periodically.

Appendix

This appendix contains the specifications and index.

Specifications	100
Specifications for the Scanner	100
Options	101
Consumables	101
Exterior Dimensions	102
Index	103

Specifications

Specifications for the Scanner

Type	Desktop ADF/flatbed scanner
Document Size	Width: 139.7 mm to 304.8 mm Length: 128 mm to 432 mm (Normal Mode) 128 mm to 630 mm (Long Document Mode) 128 mm to 540 mm (Long Document Mode/Color 600 dpi Mode)
Document Thickness	Black-and-white Documents • Simplex: 0.06 mm to 0.15 mm • Duplex: 0.07 mm to 0.15 mm Black-and-white/Color Documents Mixed 0.07 mm to 0.15 mm Color Documents 0.08 mm to 0.15 mm
Document Weight	Black-and-white Documents • Simplex: 42 to 128 g/m ² • Duplex: 50 to 128 g/m ² Black-and-white/Color Documents Mixed 50 to 128 g/m ² Color Documents 64 to 128 g/m ²
Document Feeding	Feeder/Flatbed
Scanning Method	3-line CCD
Light Source	Xenon lamp
Scanning Side	Simplex (automatic inversion of document for duplex scanning)
Scanning Mode	Black-and-white, advanced text enhanced, error diffusion, 256-level grayscale, 24-bit color
Scanning Resolution (primary scan lines x secondary scan lines)	600 x 600 dpi/400 x 400 dpi/300 x 300 dpi/ 240 x 240 dpi/200 x 200 dpi/150 x 150 dpi/ 100 x 100 dpi
Scanning Speed (portrait LTR/A4-size document):	
Black-and-White	Simplex 300 x 300 dpi 70 ppm Duplex 300 x 300 dpi 36 ipm
256-level grayscale	Simplex 300 x 300 dpi 68 ppm Duplex 300 x 300 dpi 36 ipm
24-bit color	Simplex 150 x 150 dpi 70 ppm Duplex 150 x 150 dpi 36 ipm
Automatic Feed	Max. 100 sheets (80g/m ²) or stack 13 mm or less
Interface	SCSI-III/Hi-Speed USB 2.0
Other Functions	Automatic paper size detection, Dropout color, Count Only Mode, Job function

Dimensions	300 mm (H) x 575 mm (W) x 602 mm (D)
Weight	Approximately 33.6 kg
Power Requirement	AC 220-240V (50/60 Hz), 0.6 A (max)
Power Consumption	Operating: 0.74 A maximum Ready: Under 0.23 A
Noise	Less than 78 dB
Operating Environment	Temperature: 15°C to 30°C (59°F to 86°F) Humidity: 25% to 80% RH

- You can use the functions noted above if the software supports them.
- They may not work depending on your computer's capabilities and the software you are using.

Specifications are subject to change without notice.

Options

Stamp Unit Stamps a mark on the surface of a document to indicate it has been scanned. (See "Stamp Unit," on p. 21.)

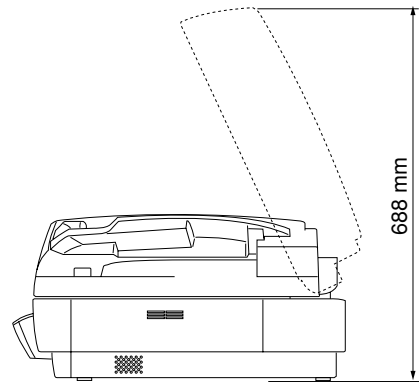
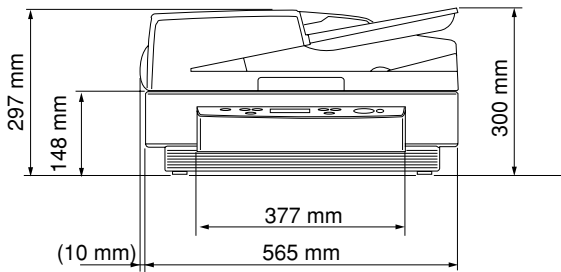
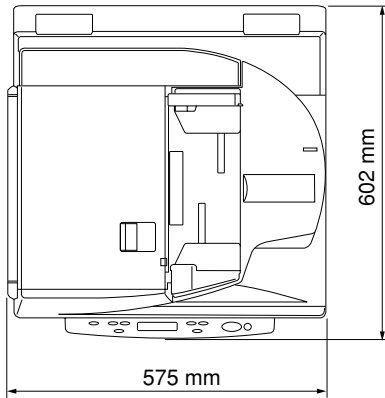
Consumables

Stamp Cartridge For replenishing the stamp unit.

- For details about options and consumables, contact your sales representative or your service representative.

Exterior Dimensions

Units: millimeters



Index

- A -

Air vents	18
Automatic feeding	57
Auxiliary paper	49

- B -

Batch separation	59
Before getting started	14

- C -

CapturePerfect	36
-How to start CapturePerfect	40
-How to start the Job Registration Tool	41
-Installation	37
Carrying	9
Cleaning	
-Feeder	90
-Main unit	92
-Platen glass	93
-Power plug	98
-Pressure board (Black)	93
-Rollers	95
Connecting to a computer	25
Consumables	101

- D -

Daily cleaning	92
Desktop ADF/flatbed scanner	100
DIP switch	26
Documents	
-Capacity	47
-Placing	48
-Type	46
Document eject tray	14, 49
Document set indicator	49
Document feeder tray	14
Display Contrast Mode	71

- E -

Enter key	71
Error messages	83
Event function	60
Exterior dimensions	102

- F -

Features of DR-7080C	12
Feeder	16
-Document eject tray	16
-Document feeder tray	16
-Document set indicator	16
-Feeder cover	16
-Opening lever	16
-Slide guide	16
Ferrite Core	15
File separation	64
Flatbed	17, 50
-Opening sensor	17
-Platen glass	17
-Power switch	17
-Pressure board (Black)	17

- I -

Installation location	7
ISIS/TWAIN drivers	36
-How to display the ISIS/TWAIN driver Help file	39
-Installation	37

- J -

Job function	20
Job key	59
Job Mode	59
Job Registration Tool	36

- L -

Long Document Mode	70
Load limitation mark	47

- M -

Messages	83
----------------	----

- N -

New File key	19
--------------------	----

- O -

Operating environment	24
Operation panel	16, 19
-Enter key	19

-Job keys	19	SCSI connectors	25
-Menu key	19	SCSI ID	26
-New File key	19	SCSI Transfer Speed	29
-Set keys	19	Set key	72
-Start key	19	Setup disc	14
-Stop key	19	Slide guide	48
Options	21, 101	Software	36
		-How to use the software	39
		-Installation	37
		-Uninstallation	43
		Specifications	100
		Stamp cartridge	90
		Stamp unit	21
		Standard feeding	55
		Stand-by Mode	70
		Start key	19
		Stop key	19
		- T -	
		Terminator	27
		Transportation screw	15
		Troubleshooting	86
		Turning OFF the power	34
		Turning ON the power	31
		- U -	
		Unpacking	14
		USB 2.0 interface cable	30
		USB 2.0 interface card	29
		USB connections	
		-Connecting to a computer	25
		-Operating environment	24
		User modes	69
		-Functions	70
		-How to set the user modes	72
		- S -	
Safe operation	5		
Scan procedure	54		
-Automatic feeding	57		
-Panel feeding	56		
-Standard feeding	55		
SCSI cable	26		
SCSI cards	25		
SCSI connections			
-Connecting to a computer	25		
-Operating environment	24		

